

*FENTON*  
*MODEL MANAGEMENT*



*ADAM*

Height: 6'2" Suit: 40.5 L Waist: 32" Inseam: 32" Shoes: 11 US Hair: Brown Eyes: Hazel

*FENTON*  
*MODEL MANAGEMENT*



*ADAM*

Height: 6'2" Suit: 40.5 L Waist: 32" Inseam: 32" Shoes: 11 US Hair: Brown Eyes: Hazel

# FENTON

MODEL MANAGEMENT



## ADAM

Height: 6'2" Suit: 40.5 L Waist: 32" Inseam: 32" Shoes: 11 US Hair: Brown Eyes: Hazel

# FENTON

MODEL MANAGEMENT



*ADAM*

Height: 6'2" Suit: 40.5 L Waist: 32" Inseam: 32" Shoes: 11 US Hair: Brown Eyes: Hazel

*FENTON*  
*MODEL MANAGEMENT*



*ADAM*

Height: 6'2" Suit: 40.5 L Waist: 32" Inseam: 32" Shoes: 11 US Hair: Brown Eyes: Hazel

*FENTON*  
*MODEL MANAGEMENT*



*ADAM*

Height: 6'2" Suit: 40.5 L Waist: 32" Inseam: 32" Shoes: 11 US Hair: Brown Eyes: Hazel

*FENTON*  
MODEL MANAGEMENT

VINTAGE BLUE  
J E A N S W E A R



*ADAM*

Height: 6'2" Suit: 40.5 L Waist: 32" Inseam: 32" Shoes: 11 US Hair: Brown Eyes: Hazel

# FENTON

MODEL MANAGEMENT



On Her  
Dress: Nanette Lepore, Faye's,  
Mequon and Brookfield; handbag:  
Ted Baker; sunglasses: Prada

On Him  
Sweater and T-shirt: Banana  
Republic; jeans: Calvin Klein,  
Boston Store, various locations;  
sunglasses, Ray-Ban;  
shoes, Cole Haan

48 M | March 2014



March 2014 | M 49

## ADAM

Height: 6'2" Suit: 40.5 L Waist: 32" Inseam: 32" Shoes: 11 US Hair: Brown Eyes: Hazel



# FENTON

MODEL MANAGEMENT

**TEACHING HIS SON TO BRUSH BETTER  
ONLY TAKES ANDREW 30 EXTRA SECONDS**



**A LITTLE MORE MAKES A BIG DIFFERENCE**

**Colgate** JOIN OUR HEALTHY MOUTH MISSION

**HB**  
HARBOR BEACH  
FORT LAUDERDALE RESORT & SPA



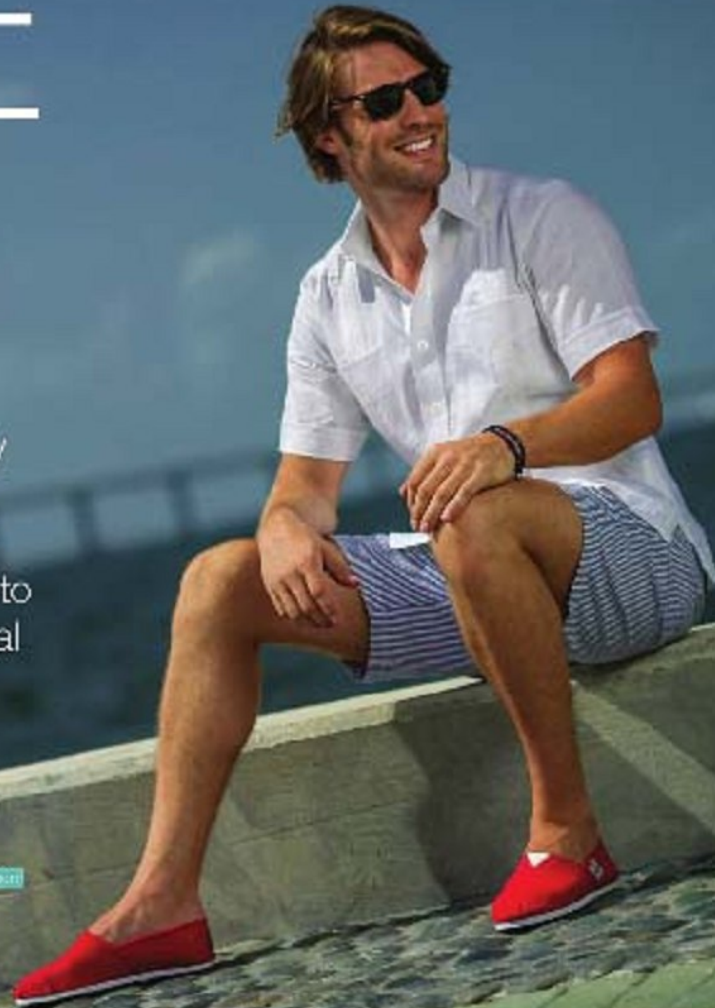
*ADAM*

Height: 6'2" Suit: 40.5 L Waist: 32" Inseam: 32" Shoes: 11 US Hair: Brown Eyes: Hazel

Wardrobe

# CULTURE STYLE

If you're a stylish guy living in The Magic City who refuses to trade comfort for fashion, a guayabera shirt is probably a staple in your wardrobe. If you need a little more inspiration to amp up your closet, check out these essential looks for any season.



Photography: Nick Garcia for iStock and Studio [The Creative Studio](#)

Model: Adam Green for Fenton [Model Management](#)

Styling: Nely Varela [Fashion Stylist](#)

Hair & Makeup: Erika Hill

Wardrobe: Guayaberas by Danner, Polo, W. L. Harrig, Polo, Duvet, Brant Meunier, FENTON GUAYABERA [Fenton](#)

Shirts: Azzurro, Alcantara

Photography Assistant: Alvaro Ibarra

Production: Anna Fernandez for E! Entertainment Studio

Locations: Mary Bristol Village, Palm Springs, Encanto, CA

Shoes by Azzurro Polo, Azzurro Polo, Danner, Polo, W. L. Harrig, Polo, Duvet, Brant Meunier, FENTON GUAYABERA [Fenton](#)  
Shirts: Azzurro, Alcantara  
Photography Assistant: Alvaro Ibarra  
Production: Anna Fernandez for E! Entertainment Studio  
Locations: Mary Bristol Village, Palm Springs, Encanto, CA

ADAM

Height: 6'2" Suit: 40.5 L Waist: 32" Inseam: 32" Shoes: 11 US Hair: Brown Eyes: Hazel

*FENTON*  
MODEL MANAGEMENT



*ADAM*

Height: 6'2" Suit: 40.5 L Waist: 32" Inseam: 32" Shoes: 11 US Hair: Brown Eyes: Hazel

# FENTON

MODEL MANAGEMENT



*ADAM*

Height: 6'2" Suit: 40.5 L Waist: 32" Inseam: 32" Shoes: 11 US Hair: Brown Eyes: Hazel

# FENTON

MODEL MANAGEMENT



*ADAM*

Height: 6'2" Suit: 40.5 L Waist: 32" Inseam: 32" Shoes: 11 US Hair: Brown Eyes: Hazel

*FENTON*  
*MODEL MANAGEMENT*



*ADAM*

Height: 6'2" Suit: 40.5 L Waist: 32" Inseam: 32" Shoes: 11 US Hair: Brown Eyes: Hazel

*FENTON*  
*MODEL MANAGEMENT*



*ADAM*

Height: 6'2" Suit: 40.5 L Waist: 32" Inseam: 32" Shoes: 11 US Hair: Brown Eyes: Hazel

*FENTON*  
MODEL MANAGEMENT



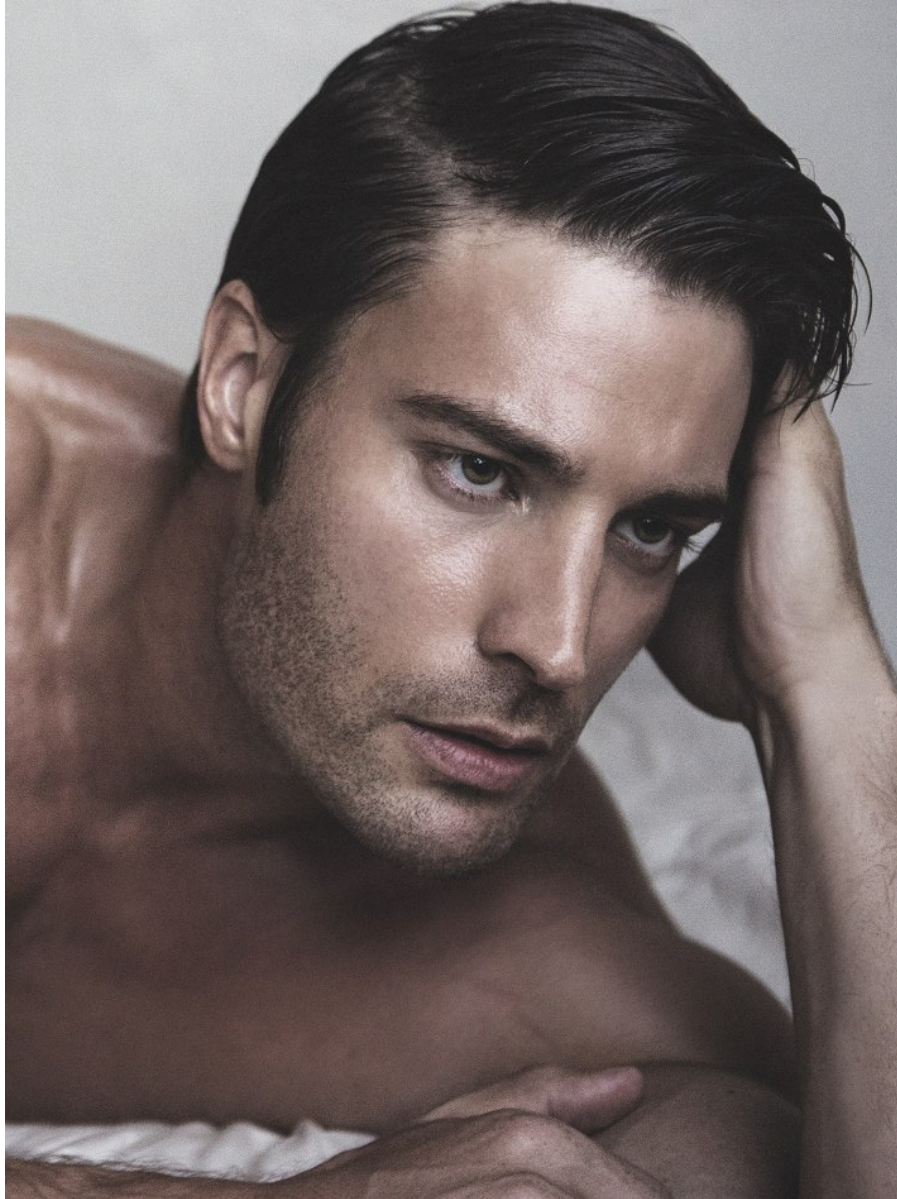
*ADAM*

Height: 6'2" Suit: 40.5 L Waist: 32" Inseam: 32" Shoes: 11 US Hair: Brown Eyes: Hazel



# FENTON

MODEL MANAGEMENT



## ADAM

Height: 6'2" Suit: 40.5 L Waist: 32" Inseam: 32" Shoes: 11 US Hair: Brown Eyes: Hazel

*FENTON*  
*MODEL MANAGEMENT*



*ADAM*

Height: 6'2" Suit: 40.5 L Waist: 32" Inseam: 32" Shoes: 11 US Hair: Brown Eyes: Hazel

*FENTON*  
*MODEL MANAGEMENT*



*ADAM*

Height: 6'2" Suit: 40.5 L Waist: 32" Inseam: 32" Shoes: 11 US Hair: Brown Eyes: Hazel