

FENTON
MODEL MANAGEMENT



PHILIP

Height: 6'1" Suit: 38 R Waist: 30" Inseam: 32" Shirt: 24â€ Shoes: 11 US Hair: Brown Eyes: Hazel

FENTON

MODEL MANAGEMENT



PHILIP

Height: 6'1" Suit: 38 R Waist: 30" Inseam: 32" Shirt: 24â€ Shoes: 11 US Hair: Brown Eyes: Hazel

FENTON
MODEL MANAGEMENT



PHILIP

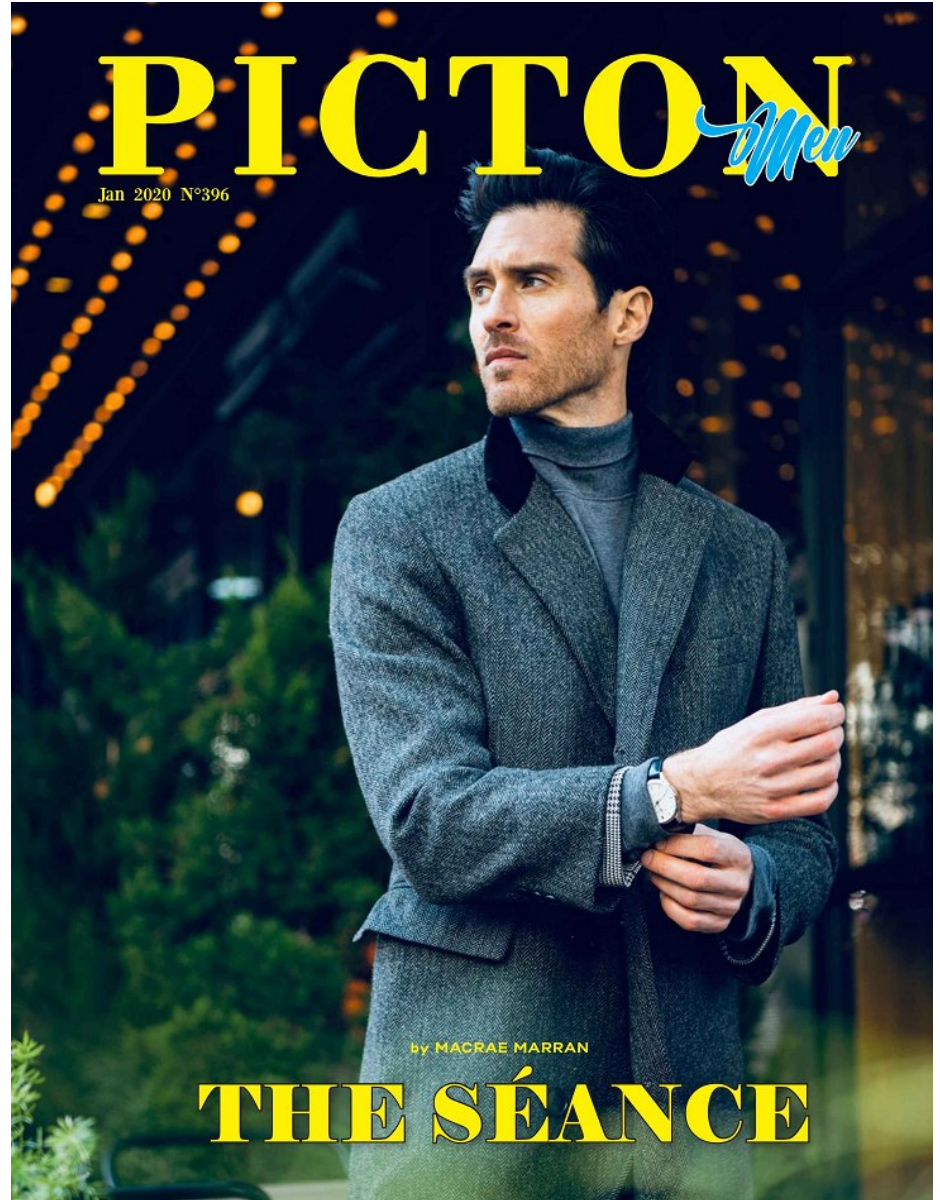
Height: 6'1" Suit: 38 R Waist: 30" Inseam: 32" Shirt: 24â€³ Shoes: 11 US Hair: Brown Eyes: Hazel



THE

SÉANCE

PHOTOGRAPHER: MACRAE MARRAN
WARDROBE STYLIST/CREATIVE DIRECTOR: CHE @411
MAKEUP ARTIST: SONYA WATSON
HAIR STYLIST: PAYTON HOLBROOK
VIDEOGRAPHER: ANDREW WANG
MODEL: PHILIP ANTHONY MANGAN @FENTON
ASSISTANT: HAILEY BURLING



PHILIP

Height: 6'1" Suit: 38 R Waist: 30" Inseam: 32" Shirt: 24&#x26; Shoes: 11 US Hair: Brown Eyes: Hazel

CLOTHES THAT DO DOUBLE DUTY

We know—you're SICK OF WINTER and bulky outfits. So grab these great pieces—they'll KEEP YOU WARM now, but they're LIGHT enough to carry you through SPRING'S THAW. (We promise: Spring is coming.)

A Top-Tier Topcoat
 Buttoned up, this timeless, tweedy Prada overcoat offers plenty of insulation, but when things get warmer, it looks just as good worn open over a nubby sweater.
 Coat (\$4,100) by Prada.

A Better Sweater
 In subzero temps, a thick raglan knit like this one, from Louis Vuitton, serves as a toasty middle layer. When spring hits, it can carry an outfit on jacket required.
 Sweater (\$1,050) by Louis Vuitton.

Focal Cords
 Anytime it's south of 70 degrees, corduroy is good for instant texture, depth, and warmth. Keep a pair like these, from Hugo Boss, in rotation one month out of the year.
 Trousers (\$395) by Boss.

I'm just an accessory to pick up chicks!

Shoes That Shine
 Ferragamo's hybrid boot shoe is the antidote to duck-boot fatigue. It's got a classic Wallabee-like shape, camel-suede uppers that'll let your feet breathe, and thick rubber soles to keep slush at bay.
 Boots by Salvatore Ferragamo.
 —Adrienne Westfield

ESQUIRE ENDORSEMENT
INTRODUCING YOUR NEW GETAWAY GEAR

*** It's tougher than you think, creating the perfect weekend-er, but Darby Scott may have pulled it off with this spacious, just-slouchy-enough go-bag made of supple, pebbled calfskin. It's so good, in fact, it gets The Endorsement: a once-weekly feature highlighting the best stuff out there, which you can find on Esquire.com. The dot-com squad shot a different version of the same bag. (We'll agree to disagree just this once.) Head online to see which one you like best. —J.R.

Winter 2018_Esquire 25



PHILIP

Height: 6'1" Suit: 38 R Waist: 30" Inseam: 32" Shirt: 24&#x20; Shoes: 11 US Hair: Brown Eyes: Hazel

FENTON

MODEL MANAGEMENT



PHILIP

Height: 6'1" Suit: 38 R Waist: 30" Inseam: 32" Shirt: 24&#x20; Shoes: 11 US Hair: Brown Eyes: Hazel

FENTON

MODEL MANAGEMENT



PHILIP

Height: 6'1" Suit: 38 R Waist: 30" Inseam: 32" Shirt: 24â Shoes: 11 US Hair: Brown Eyes: Hazel

FENTON

MODEL MANAGEMENT



PHILIP

Height: 6'1" Suit: 38 R Waist: 30" Inseam: 32" Shirt: 24&#x20; Shoes: 11 US Hair: Brown Eyes: Hazel

FENTON
MODEL MANAGEMENT



PHILIP

Height: 6'1" Suit: 38 R Waist: 30" Inseam: 32" Shirt: 24â€³ Shoes: 11 US Hair: Brown Eyes: Hazel

FENTON

MODEL MANAGEMENT



PHILIP

Height: 6'1" Suit: 38 R Waist: 30" Inseam: 32" Shirt: 24â€³ Shoes: 11 US Hair: Brown Eyes: Hazel

FENTON

MODEL MANAGEMENT



PHILIP

Height: 6'1" Suit: 38 R Waist: 30" Inseam: 32" Shirt: 24â€³ Shoes: 11 US Hair: Brown Eyes: Hazel

FENTON
MODEL MANAGEMENT



PHILIP

Height: 6'1" Suit: 38 R Waist: 30" Inseam: 32" Shirt: 24â€ Shoes: 11 US Hair: Brown Eyes: Hazel

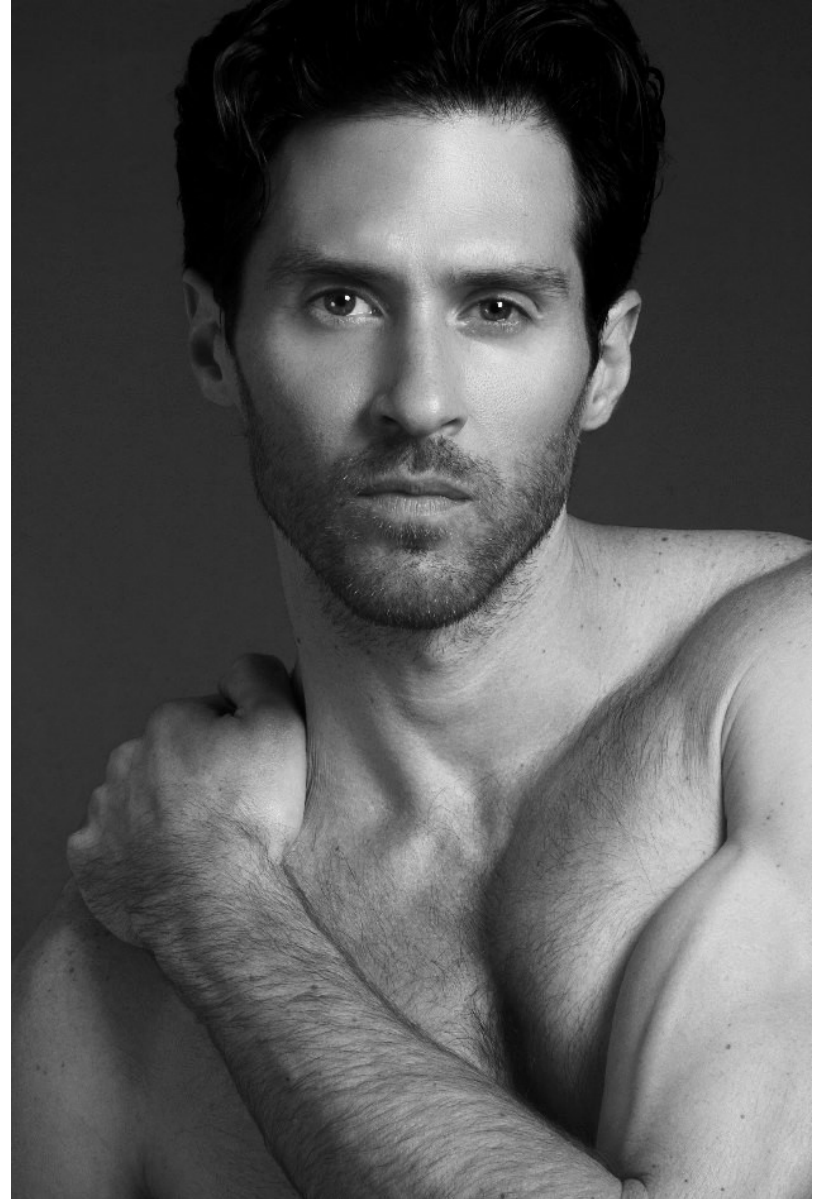
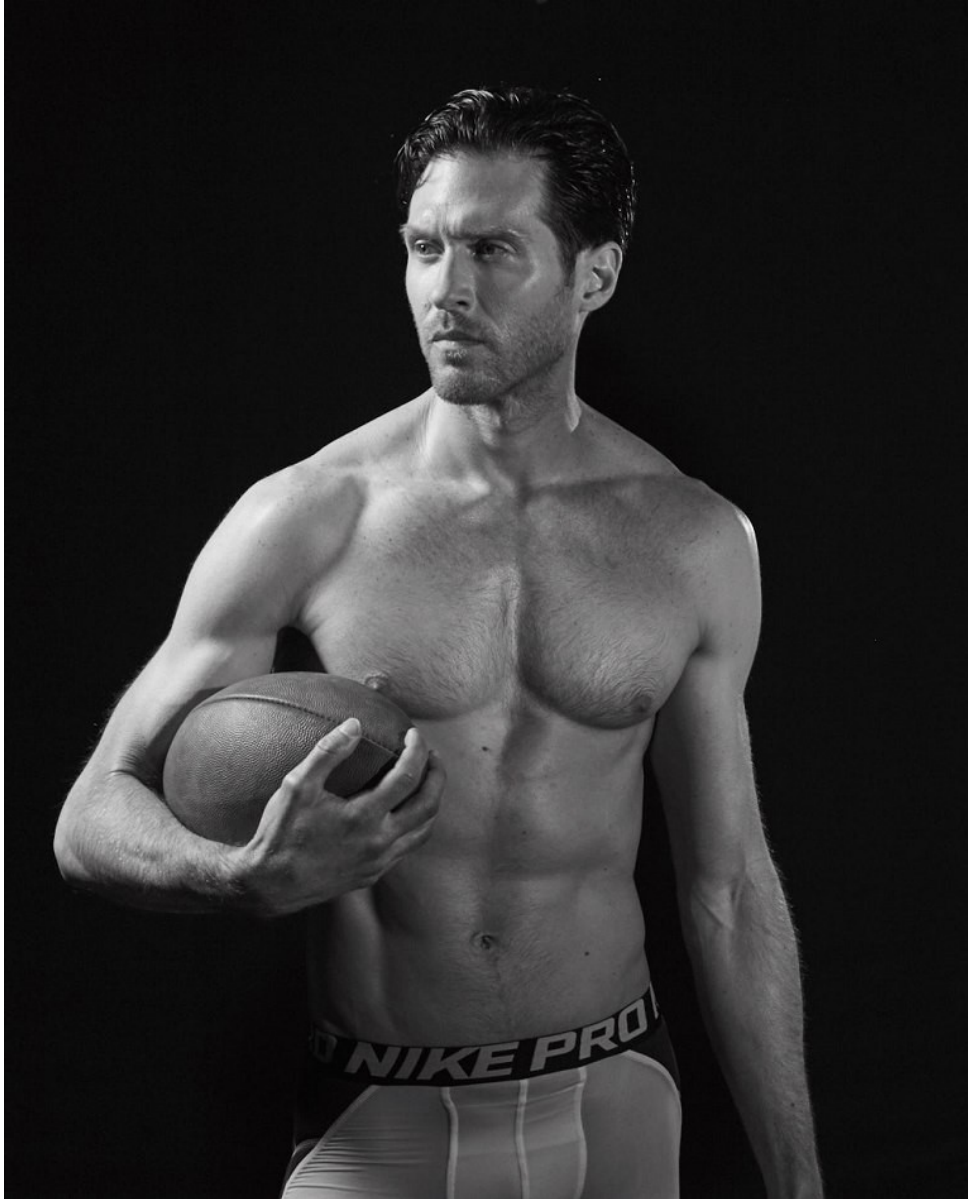
FENTON
MODEL MANAGEMENT



PHILIP

Height: 6'1" Suit: 38 R Waist: 30" Inseam: 32" Shirt: 24–26" Shoes: 11 US Hair: Brown Eyes: Hazel

FENTON
MODEL MANAGEMENT



PHILIP

Height: 6'1" Suit: 38 R Waist: 30" Inseam: 32" Shirt: 24â€³ Shoes: 11 US Hair: Brown Eyes: Hazel

FENTON
MODEL MANAGEMENT



PHILIP

Height: 6'1" Suit: 38 R Waist: 30" Inseam: 32" Shirt: 24â€³ Shoes: 11 US Hair: Brown Eyes: Hazel