

FENTON

MODEL MANAGEMENT

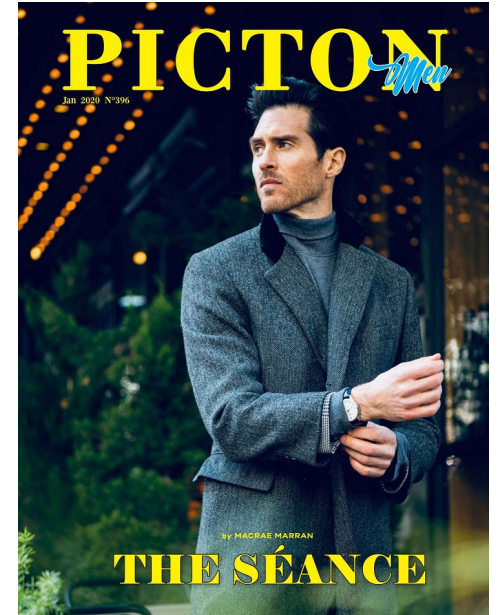


PICTON 24



THE SÉANCE

PHOTOGRAPHER: MACRAE MARRAN
 WARDROBE: SYLVESTER GREEN, DORCEOM CHE @411
 MAKEUP ARTIST: SONYA WATSON
 HAIR STYLING: PAXTON HOLBROOK
 VISUALS: ANDREW WANG
 MODEL: PHILIP ANTHONY MANGAN @FENTON
 ASSISTANT: HAILEY BURLING



THE SÉANCE

PHILIP

Height: 6'1" Suit: 38 R Waist: 30" Inseam: 32" Shirt: 24&#x26; Shoes: 11 US Hair: Brown Eyes: Hazel

FENTON

MODEL MANAGEMENT



PHILIP

Height: 6'1" Suit: 38 R Waist: 30" Inseam: 32" Shirt: 24&#x20; Shoes: 11 US Hair: Brown Eyes: Hazel

FENTON

MODEL MANAGEMENT

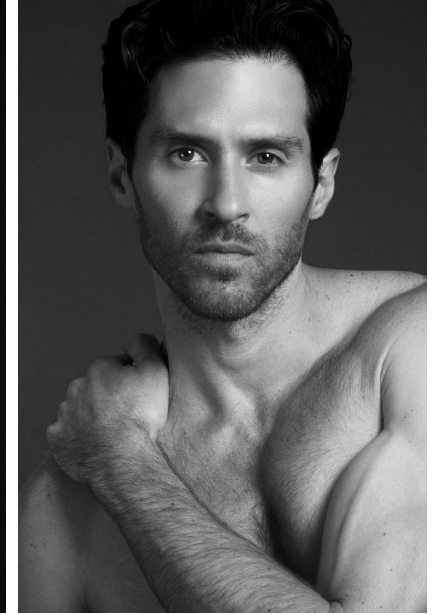


PHILIP

Height: 6'1" Suit: 38 R Waist: 30" Inseam: 32" Shirt: 24 1/2" Shoes: 11 US Hair: Brown Eyes: Hazel

FENTON

MODEL MANAGEMENT



PHILIP

Height: 6'1" Suit: 38 R Waist: 30" Inseam: 32" Shirt: 24â€³ Shoes: 11 US Hair: Brown Eyes: Hazel