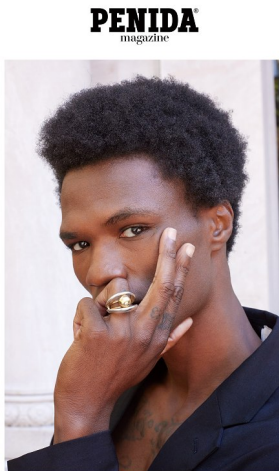


FENTON

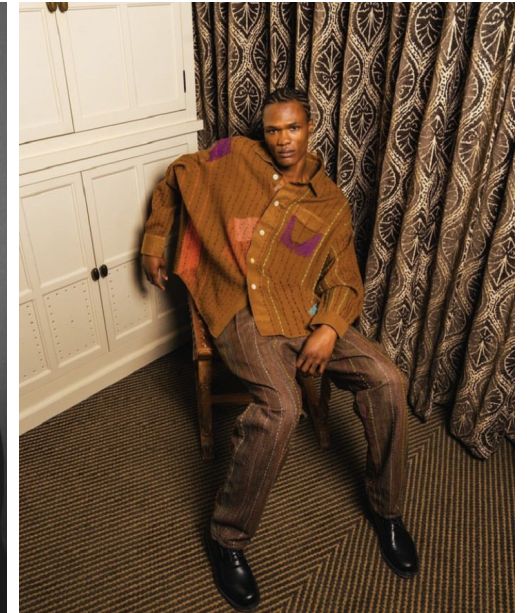
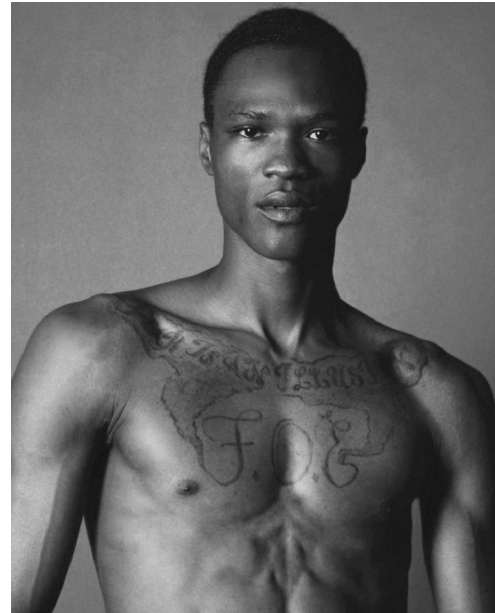
MODEL MANAGEMENT



PENIDA Magazine



35



ZULU

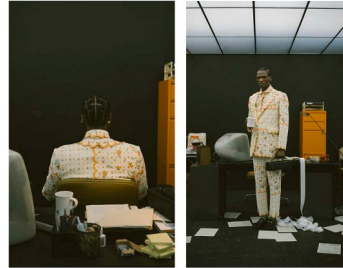
Height: 6'3" Suit: 40 L Waist: 29" Inseam: 34" Shirt: 26â€³ Shoes: 10 US Hair: Black Eyes: Brown

FENTON

MODEL MANAGEMENT

MOVER | EDITORIAL

ANOTHER DAY *at the Office*



BLAZER and SHIRT: ZIMO / @zimo.me

BLAZER, SHIRT, PANTS: ZIMO / @zimo.me
 SHOES: GUCCI / @gucci
 ROCKS: Doublet / @doublet
 B&B: Mavon Dettl / @mavondettl
 EARRING: Justine Climpet / @justineclimpet

mover-magazine.com 23



ZULU

Height: 6'3" Suit: 40 L Waist: 29" Inseam: 34" Shirt: 26â€³ Shoes: 10 US Hair: Black Eyes: Brown

FENTON

MODEL MANAGEMENT

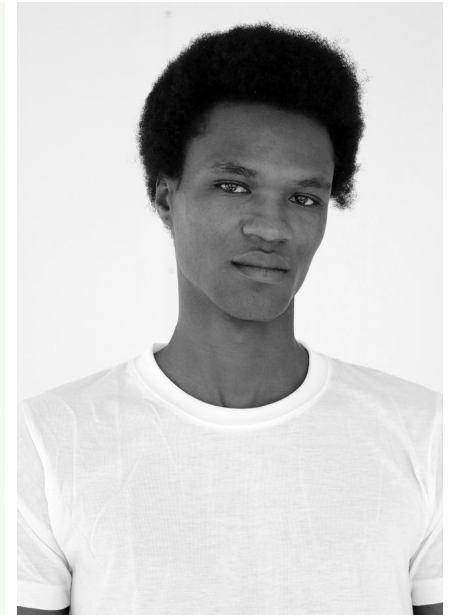


ZULU

Height: 6'3" Suit: 40 L Waist: 29" Inseam: 34" Shirt: 26â€³ Shoes: 10 US Hair: Black Eyes: Brown

FENTON

MODEL MANAGEMENT



ZULU

Height: 6'3" Suit: 40 L Waist: 29" Inseam: 34" Shirt: 26â€² Shoes: 10 US Hair: Black Eyes: Brown