

FENTON
MODEL MANAGEMENT



NAOKI

Height: 6'1.5" Suit: 38 R Waist: 29" Inseam: 31" Shirt: 23" Shoes: 10.5 US Hair: Black Eyes: Black

FENTON
MODEL MANAGEMENT



NAOKI

Height: 6'1.5" Suit: 38 R Waist: 29" Inseam: 31" Shirt: 23" Shoes: 10.5 US Hair: Black Eyes: Black

FENTON
MODEL MANAGEMENT

alexanderwang



NAOKI

Height: 6'1.5" Suit: 38 R Waist: 29" Inseam: 31" Shirt: 23" Shoes: 10.5 US Hair: Black Eyes: Black

FENTON
MODEL MANAGEMENT



NAOKI

Height: 6'1.5" Suit: 38 R Waist: 29" Inseam: 31" Shirt: 23" Shoes: 10.5 US Hair: Black Eyes: Black

FENTON

MODEL MANAGEMENT



NAOKI

Height: 6'1.5" Suit: 38 R Waist: 29" Inseam: 31" Shirt: 23" Shoes: 10.5 US Hair: Black Eyes: Black

FENTON

MODEL MANAGEMENT



NAOKI

Height: 6'1.5" Suit: 38 R Waist: 29" Inseam: 31" Shirt: 23" Shoes: 10.5 US Hair: Black Eyes: Black

FENTON

MODEL MANAGEMENT



NAOKI

Height: 6'1.5" Suit: 38 R Waist: 29" Inseam: 31" Shirt: 23" Shoes: 10.5 US Hair: Black Eyes: Black

FENTON

MODEL MANAGEMENT



NAOKI

Height: 6'1.5" Suit: 38 R Waist: 29" Inseam: 31" Shirt: 23" Shoes: 10.5 US Hair: Black Eyes: Black

FENTON

MODEL MANAGEMENT



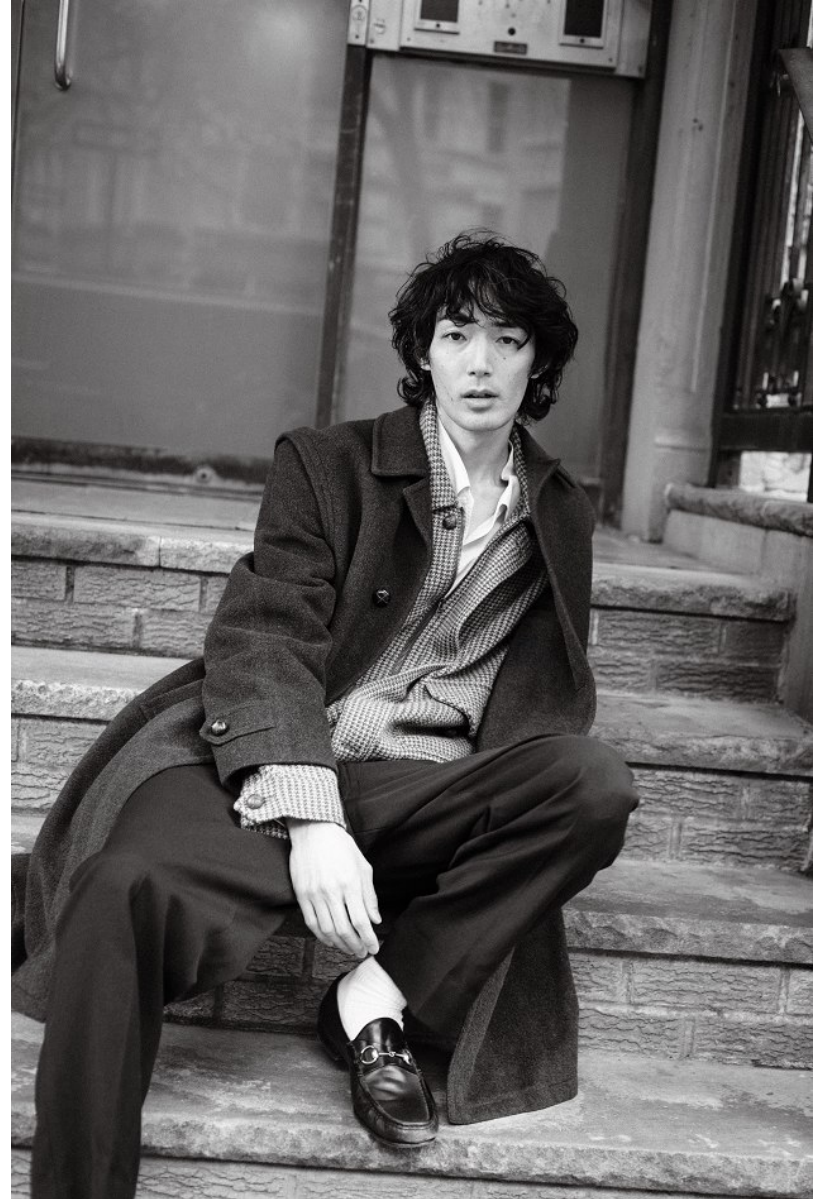
Unity in Diversity sneakers feature chrome-free, organic leather and natural vegetable dyed uppers with organic cotton laces. Trail runner with 100 percent recycled laces and mesh lining. EVA foam midsole with 50 percent recycled top sheet and 30 percent recycled Vibram EcoStep rubber outsole by **Merrell**.

28

NAOKI

Height: 6'1.5" Suit: 38 R Waist: 29" Inseam: 31" Shirt: 23" Shoes: 10.5 US Hair: Black Eyes: Black

FENTON
MODEL MANAGEMENT



NAOKI

Height: 6'1.5" Suit: 38 R Waist: 29" Inseam: 31" Shirt: 23" Shoes: 10.5 US Hair: Black Eyes: Black

FENTON
MODEL MANAGEMENT



NAOKI

Height: 6'1.5" Suit: 38 R Waist: 29" Inseam: 31" Shirt: 23" Shoes: 10.5 US Hair: Black Eyes: Black

FENTON
MODEL MANAGEMENT



NAOKI

Height: 6'1.5" Suit: 38 R Waist: 29" Inseam: 31" Shirt: 23" Shoes: 10.5 US Hair: Black Eyes: Black

FENTON
MODEL MANAGEMENT



NAOKI

Height: 6'1.5" Suit: 38 R Waist: 29" Inseam: 31" Shirt: 23" Shoes: 10.5 US Hair: Black Eyes: Black

FENTON

MODEL MANAGEMENT



NAOKI

Height: 6'1.5" Suit: 38 R Waist: 29" Inseam: 31" Shirt: 23" Shoes: 10.5 US Hair: Black Eyes: Black

FENTON

MODEL MANAGEMENT



NAOKI

Height: 6'1.5" Suit: 38 R Waist: 29" Inseam: 31" Shirt: 23" Shoes: 10.5 US Hair: Black Eyes: Black

FENTON

MODEL MANAGEMENT



NAOKI

Height: 6'1.5" Suit: 38 R Waist: 29" Inseam: 31" Shirt: 23" Shoes: 10.5 US Hair: Black Eyes: Black

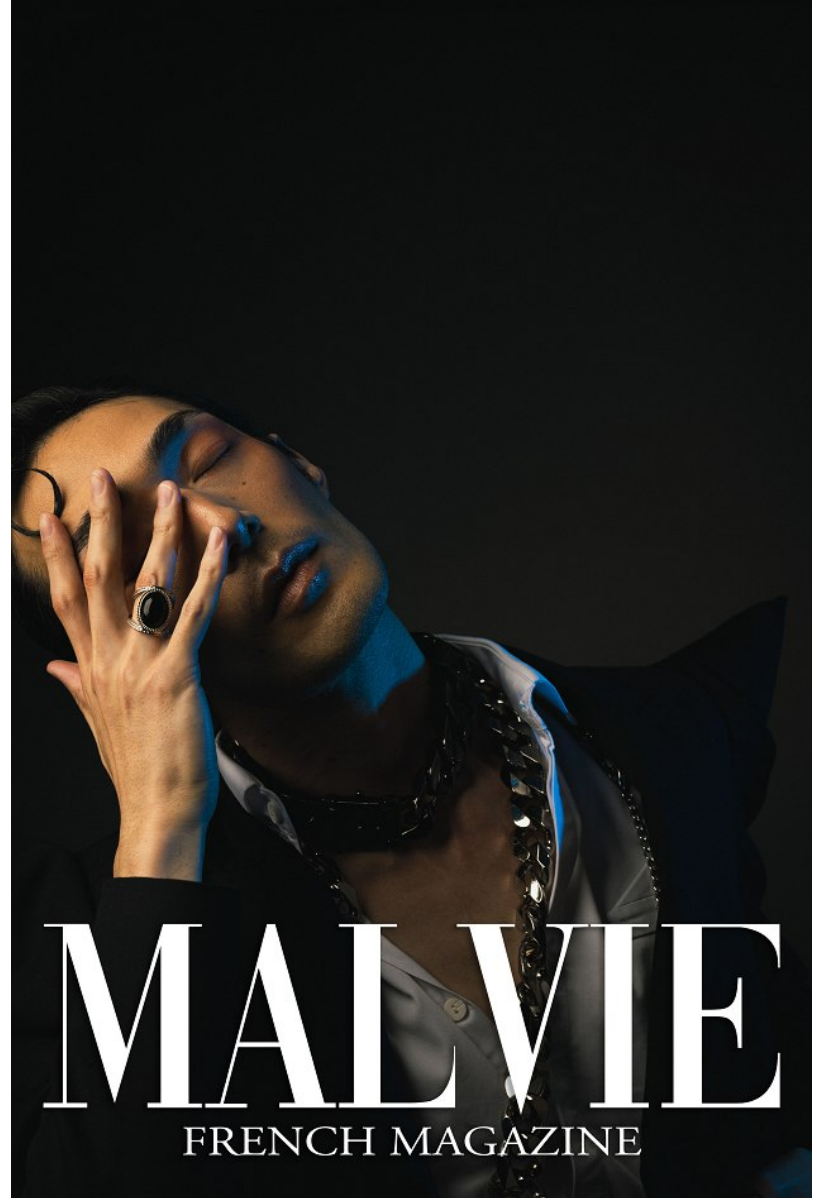
FENTON
MODEL MANAGEMENT



NAOKI

Height: 6'1.5" Suit: 38 R Waist: 29" Inseam: 31" Shirt: 23" Shoes: 10.5 US Hair: Black Eyes: Black

FENTON
MODEL MANAGEMENT



NAOKI

Height: 6'1.5" Suit: 38 R Waist: 29" Inseam: 31" Shirt: 23" Shoes: 10.5 US Hair: Black Eyes: Black

FENTON

MODEL MANAGEMENT



NAOKI

Height: 6'1.5" Suit: 38 R Waist: 29" Inseam: 31" Shirt: 23" Shoes: 10.5 US Hair: Black Eyes: Black



NAOKI

Height: 6'1.5" Suit: 38 R Waist: 29" Inseam: 31" Shirt: 23" Shoes: 10.5 US Hair: Black Eyes: Black

FENTON
MODEL MANAGEMENT



NAOKI

Height: 6'1.5" Suit: 38 R Waist: 29" Inseam: 31" Shirt: 23" Shoes: 10.5 US Hair: Black Eyes: Black

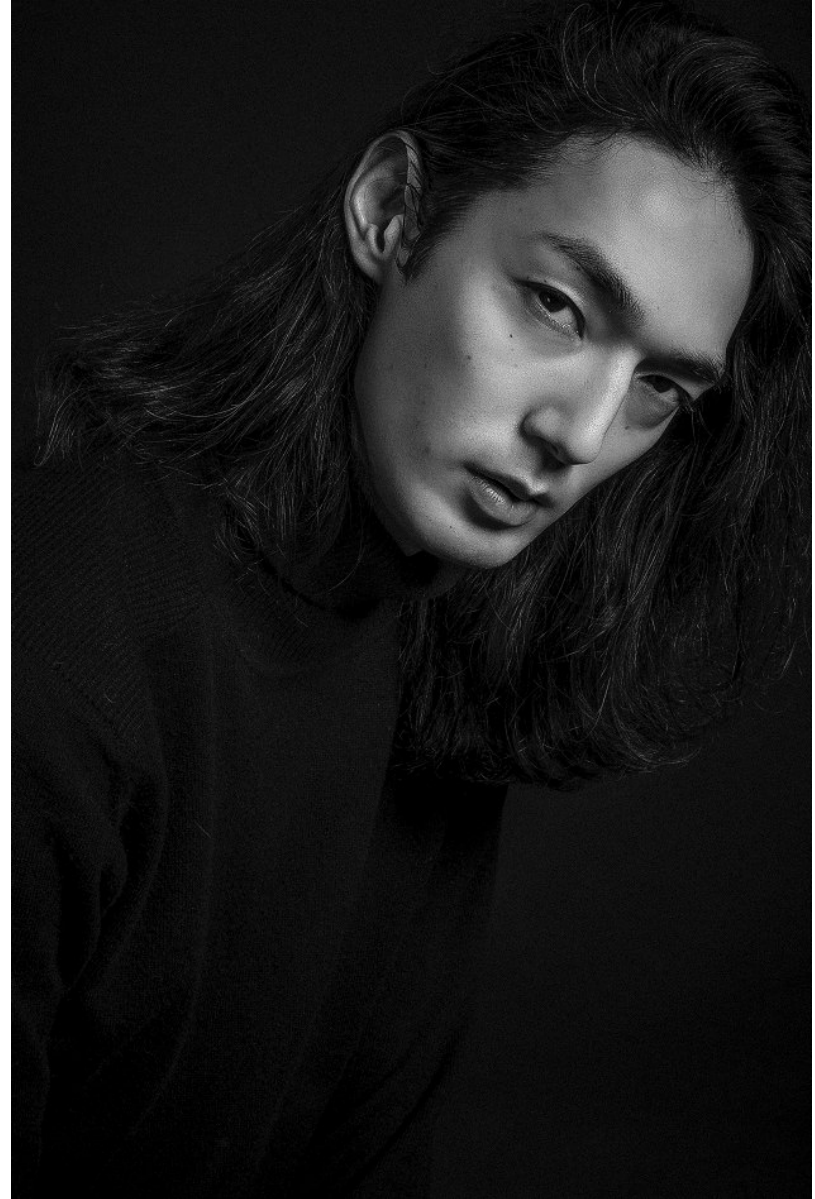
FENTON
MODEL MANAGEMENT



NAOKI

Height: 6'1.5" Suit: 38 R Waist: 29" Inseam: 31" Shirt: 23" Shoes: 10.5 US Hair: Black Eyes: Black

FENTON
MODEL MANAGEMENT



NAOKI

Height: 6'1.5" Suit: 38 R Waist: 29" Inseam: 31" Shirt: 23" Shoes: 10.5 US Hair: Black Eyes: Black

FENTON
MODEL MANAGEMENT



NAOKI

Height: 6'1.5" Suit: 38 R Waist: 29" Inseam: 31" Shirt: 23" Shoes: 10.5 US Hair: Black Eyes: Black

FENTON

MODEL MANAGEMENT



Hoff joggers crafted from sustainably treated suede; work sneakers by **Snibbs** feature slip-resistant outsoles and uppers made of 100 percent recycled cotton and recycled plastic bottles. Opposite: Knit sneaker by **Petite Jolie** features J-Lastic upper made from a recycled and scented PVC blend.



NAOKI

Height: 6'1.5" Suit: 38 R Waist: 29" Inseam: 31" Shirt: 23" Shoes: 10.5 US Hair: Black Eyes: Black

FENTON
MODEL MANAGEMENT



NAOKI

Height: 6'1.5" Suit: 38 R Waist: 29" Inseam: 31" Shirt: 23" Shoes: 10.5 US Hair: Black Eyes: Black

FENTON
MODEL MANAGEMENT



NAOKI

Height: 6'1.5" Suit: 38 R Waist: 29" Inseam: 31" Shirt: 23" Shoes: 10.5 US Hair: Black Eyes: Black