

FENTON

MODEL MANAGEMENT



NAOKI

Height: 6'1.5" Suit: 38 R Waist: 29" Inseam: 31" Shirt: 23" Shoes: 10.5 US Hair: Black Eyes: Black

FENTON

MODEL MANAGEMENT



NAOKI

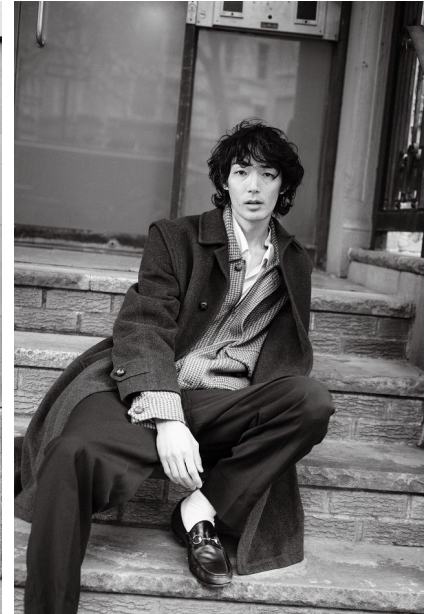
Height: 6'1.5" Suit: 38 R Waist: 29" Inseam: 31" Shirt: 23" Shoes: 10.5 US Hair: Black Eyes: Black

FENTON

MODEL MANAGEMENT



Unity is Diversity: modern
fashion choices like organic
leather and natural vegetable
dye dyes with recycled
cotton fabric. Fall sweater
with 100 percent recycled
wool and Merino wool. USA
foam insole with 50
percent recycled hardware
and 30 percent recycled
Viscose EcoStretch fabric
outside by Merrell.



NAOKI

Height: 6'1.5" Suit: 38 R Waist: 29" Inseam: 31" Shirt: 23" Shoes: 10.5 US Hair: Black Eyes: Black

FENTON

MODEL MANAGEMENT

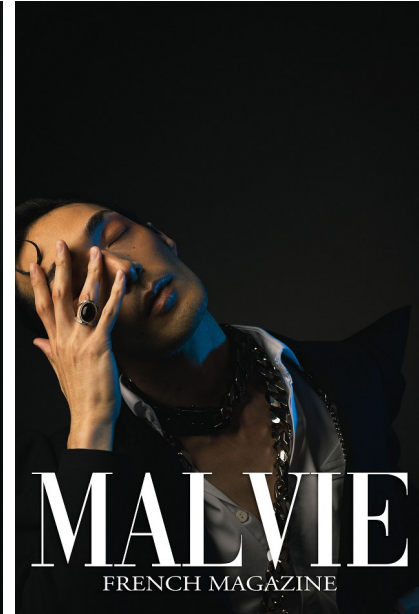


NAOKI

Height: 6'1.5" Suit: 38 R Waist: 29" Inseam: 31" Shirt: 23" Shoes: 10.5 US Hair: Black Eyes: Black

FENTON

MODEL MANAGEMENT

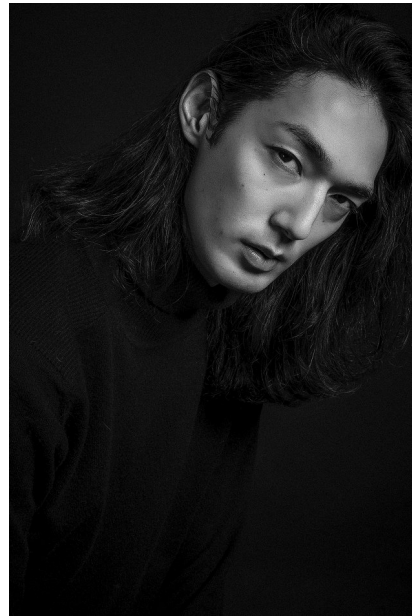


NAOKI

Height: 6'1.5" Suit: 38 R Waist: 29" Inseam: 31" Shirt: 23" Shoes: 10.5 US Hair: Black Eyes: Black

FENTON

MODEL MANAGEMENT



NAOKI

Height: 6'1.5" Suit: 38 R Waist: 29" Inseam: 31" Shirt: 23" Shoes: 10.5 US Hair: Black Eyes: Black

FENTON

MODEL MANAGEMENT



NAOKI

Height: 6'1.5" Suit: 38 R Waist: 29" Inseam: 31" Shirt: 23" Shoes: 10.5 US Hair: Black Eyes: Black