

*FENTON*  
*MODEL MANAGEMENT*



*REBECCA*

Height: 5'10" Dress: 2 US Bust: 32" Waist: 23.5" Hips: 35.5" Shoes: 8 US Hair: Auburn Red Eyes: Green

*FENTON*  
*MODEL MANAGEMENT*



*REBECCA*

Height: 5'10" Dress: 2 US Bust: 32" Waist: 23.5" Hips: 35.5" Shoes: 8 US Hair: Auburn Red Eyes: Green

# FENTON

MODEL MANAGEMENT



## REBECCA

Height: 5'10" Dress: 2 US Bust: 32" Waist: 23.5" Hips: 35.5" Shoes: 8 US Hair: Auburn Red Eyes: Green

# FENTON

MODEL MANAGEMENT



*REBECCA*

Height: 5'10" Dress: 2 US Bust: 32" Waist: 23.5" Hips: 35.5" Shoes: 8 US Hair: Auburn Red Eyes: Green

# FENTON

MODEL MANAGEMENT

OSSMAmagazine



Romper Seven For All Man Kind  
EUROPE

36 www.ossmagazine.com | editorials | december '20

OSSMA



Top Bella Dahl  
Jacket vintage

www.ossmagazine.com 37

## REBECCA

Height: 5'10" Dress: 2 US Bust: 32" Waist: 23.5" Hips: 35.5" Shoes: 8 US Hair: Auburn Red Eyes: Green



*REBECCA*

Height: 5'10" Dress: 2 US Bust: 32" Waist: 23.5" Hips: 35.5" Shoes: 8 US Hair: Auburn Red Eyes: Green

# FENTON

MODEL MANAGEMENT



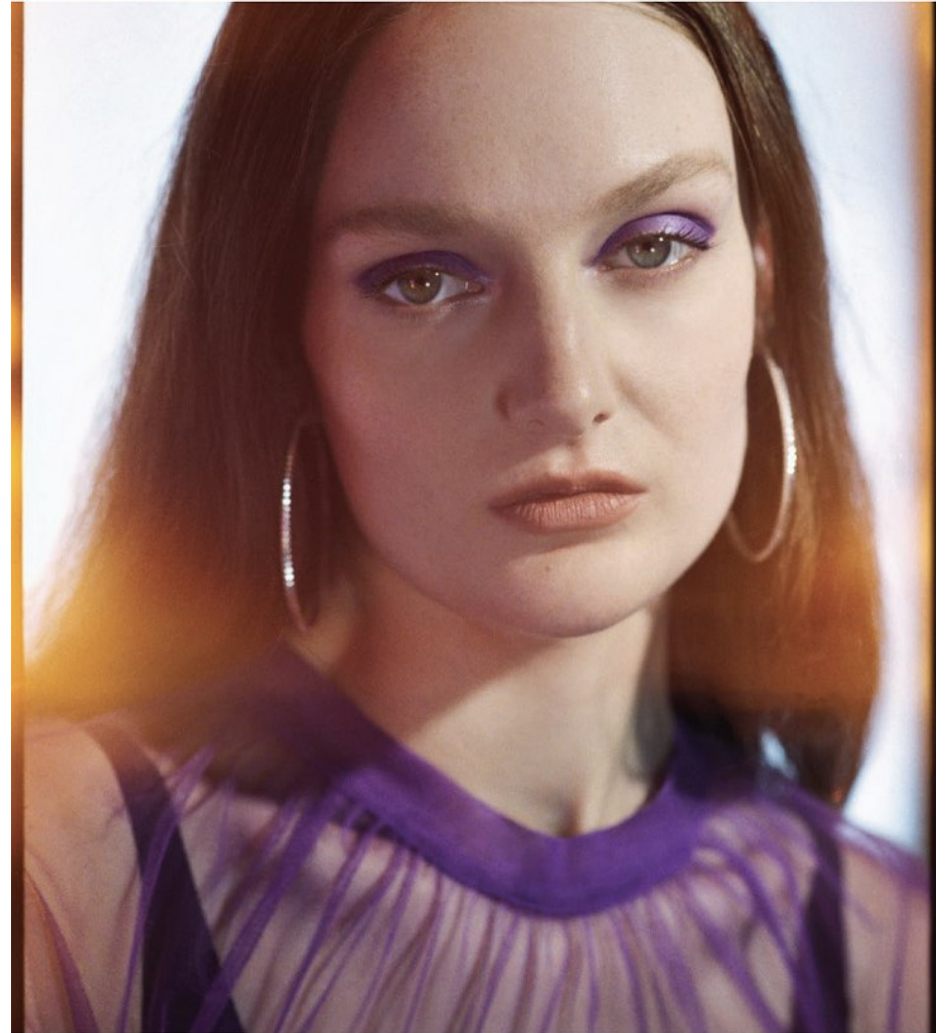
# Picton'

**Picton'** means Show Your Talent to The World.  
International Fashion, Art Magazine From London, United Kingdom  
Independent Magazine Since 2008.  
Thinking Global, Acting Local

April 2022

Be A Pictoner! [www.pictonmag.com](http://www.pictonmag.com)

571



## REBECCA

Height: 5'10" Dress: 2 US Bust: 32" Waist: 23.5" Hips: 35.5" Shoes: 8 US Hair: Auburn Red Eyes: Green

# FENTON

MODEL MANAGEMENT



## REBECCA

Height: 5'10" Dress: 2 US Bust: 32" Waist: 23.5" Hips: 35.5" Shoes: 8 US Hair: Auburn Red Eyes: Green



# FENTON

MODEL MANAGEMENT



## REBECCA

Height: 5'10" Dress: 2 US Bust: 32" Waist: 23.5" Hips: 35.5" Shoes: 8 US Hair: Auburn Red Eyes: Green

# FENTON

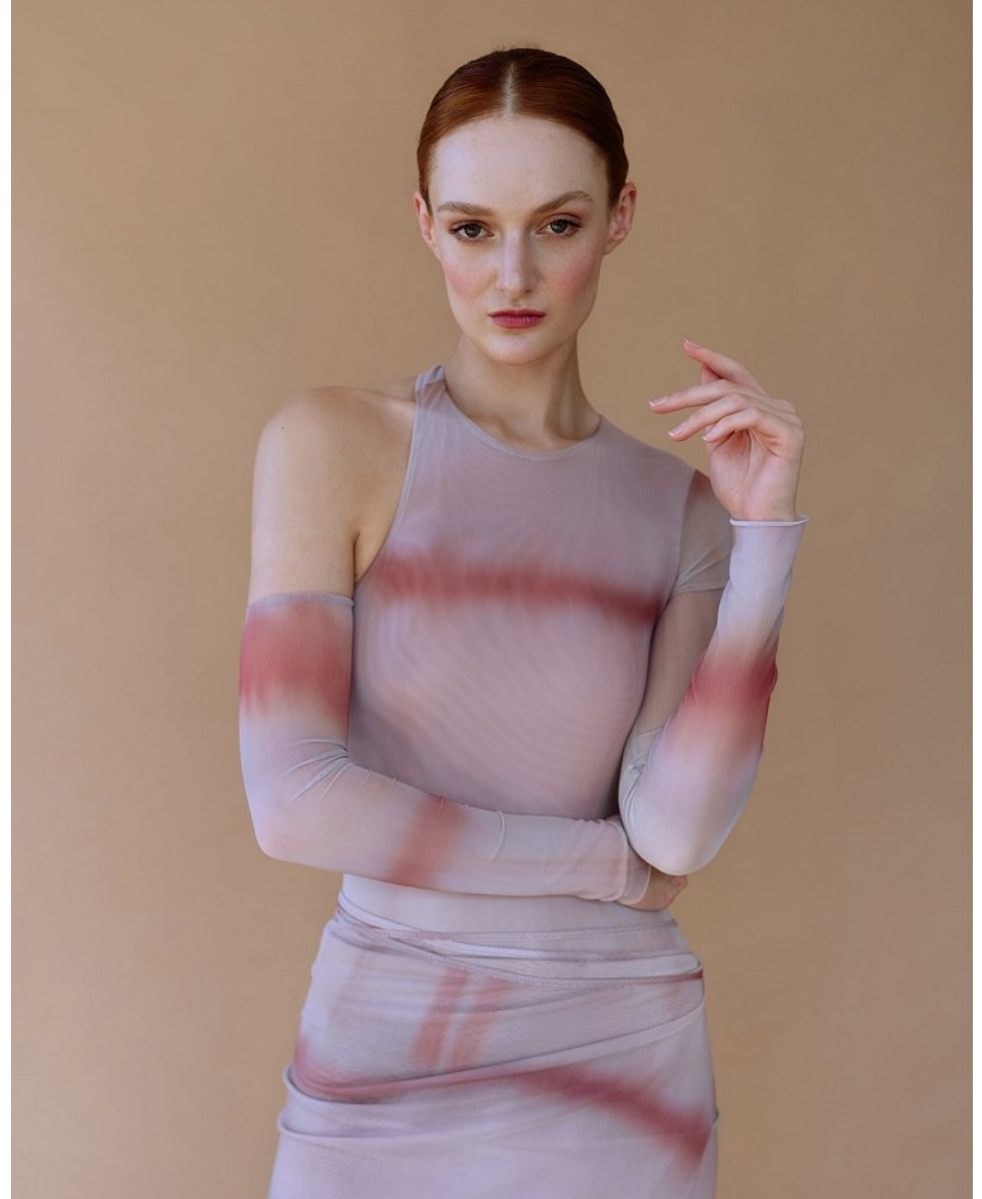
MODEL MANAGEMENT



## REBECCA

Height: 5'10" Dress: 2 US Bust: 32" Waist: 23.5" Hips: 35.5" Shoes: 8 US Hair: Auburn Red Eyes: Green

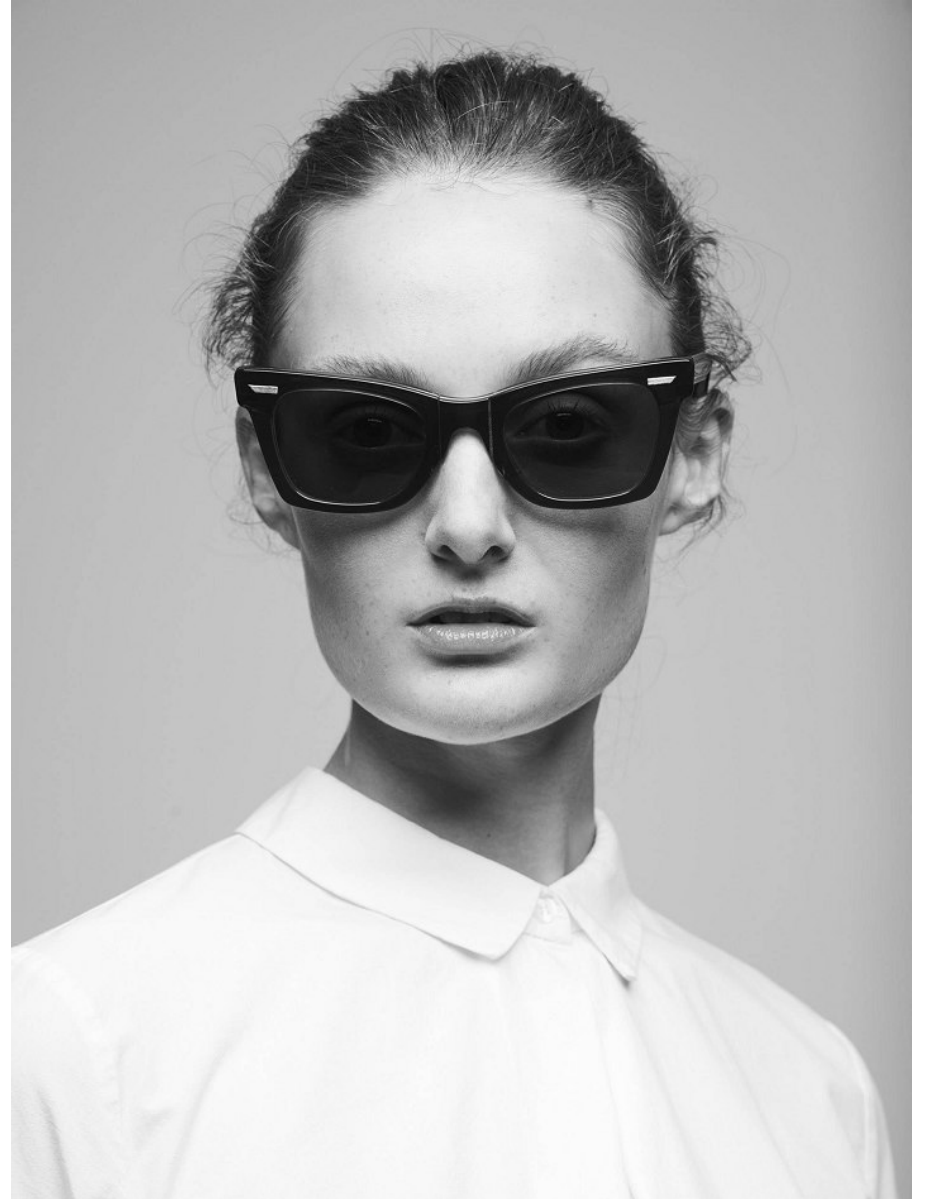
*FENTON*  
*MODEL MANAGEMENT*



*REBECCA*

Height: 5'10" Dress: 2 US Bust: 32" Waist: 23.5" Hips: 35.5" Shoes: 8 US Hair: Auburn Red Eyes: Green

*FENTON*  
*MODEL MANAGEMENT*



*REBECCA*

Height: 5'10" Dress: 2 US Bust: 32" Waist: 23.5" Hips: 35.5" Shoes: 8 US Hair: Auburn Red Eyes: Green

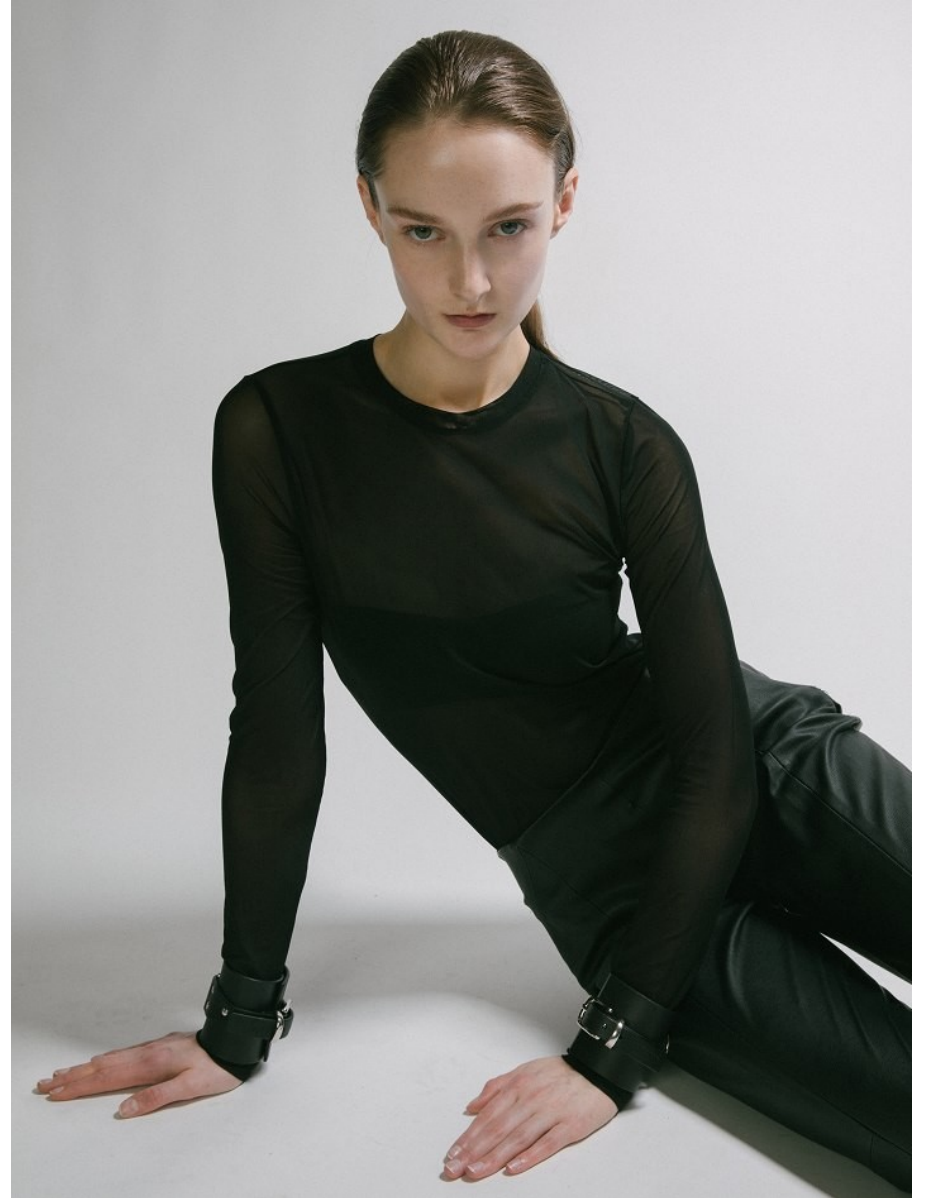
*FENTON*  
*MODEL MANAGEMENT*



*REBECCA*

Height: 5'10" Dress: 2 US Bust: 32" Waist: 23.5" Hips: 35.5" Shoes: 8 US Hair: Auburn Red Eyes: Green

*FENTON*  
*MODEL MANAGEMENT*



*REBECCA*

Height: 5'10" Dress: 2 US Bust: 32" Waist: 23.5" Hips: 35.5" Shoes: 8 US Hair: Auburn Red Eyes: Green

# FENTON

MODEL MANAGEMENT



ABITO DAVORIN CORDONE  
CAPPELLO MAISON MICHEL  
ORECCHINI CRISTINA BOMBARDI

## REBECCA

Height: 5'10" Dress: 2 US Bust: 32" Waist: 23.5" Hips: 35.5" Shoes: 8 US Hair: Auburn Red Eyes: Green



*REBECCA*

Height: 5'10" Dress: 2 US Bust: 32" Waist: 23.5" Hips: 35.5" Shoes: 8 US Hair: Auburn Red Eyes: Green



# FENTON

MODEL MANAGEMENT



ABITO LARIMELOOM

## REBECCA

Height: 5'10" Dress: 2 US Bust: 32" Waist: 23.5" Hips: 35.5" Shoes: 8 US Hair: Auburn Red Eyes: Green

# FENTON

MODEL MANAGEMENT



## REBECCA

Height: 5'10" Dress: 2 US Bust: 32" Waist: 23.5" Hips: 35.5" Shoes: 8 US Hair: Auburn Red Eyes: Green

# FENTON

MODEL MANAGEMENT



Earth Origins convertible mules; rubber garden clogs by Joules. Opposite: Birkenstock suede clogs with cork footbed.



Alegria leather patchwork clogs with slip-resistant faux wood outsoles. Opposite, clockwise from top: Gabor leather clog with rivet detailing; Rieker leather Mary Jane slip-on with Antistress insole; tooled leather clog by Bella-Vita.

32

## REBECCA

Height: 5'10" Dress: 2 US Bust: 32" Waist: 23.5" Hips: 35.5" Shoes: 8 US Hair: Auburn Red Eyes: Green



*REBECCA*

Height: 5'10" Dress: 2 US Bust: 32" Waist: 23.5" Hips: 35.5" Shoes: 8 US Hair: Auburn Red Eyes: Green

# FENTON

MODEL MANAGEMENT



*REBECCA*

Height: 5'10" Dress: 2 US Bust: 32" Waist: 23.5" Hips: 35.5" Shoes: 8 US Hair: Auburn Red Eyes: Green

*FENTON*  
*MODEL MANAGEMENT*



*REBECCA*

Height: 5'10" Dress: 2 US Bust: 32" Waist: 23.5" Hips: 35.5" Shoes: 8 US Hair: Auburn Red Eyes: Green

# FENTON

MODEL MANAGEMENT



Ankle boots by **Earth** with side zipper and ruching detail.  
Opposite page: Chukka driving mocs by **Twisted X** feature cork uppers and rubber soles.

## REBECCA

Height: 5'10" Dress: 2 US Bust: 32" Waist: 23.5" Hips: 35.5" Shoes: 8 US Hair: Auburn Red Eyes: Green

# FENTON

MODEL MANAGEMENT



## REBECCA

Height: 5'10" Dress: 2 US Bust: 32" Waist: 23.5" Hips: 35.5" Shoes: 8 US Hair: Auburn Red Eyes: Green



*FENTON*  
*MODEL MANAGEMENT*



*REBECCA*

Height: 5'10" Dress: 2 US Bust: 32" Waist: 23.5" Hips: 35.5" Shoes: 8 US Hair: Auburn Red Eyes: Green

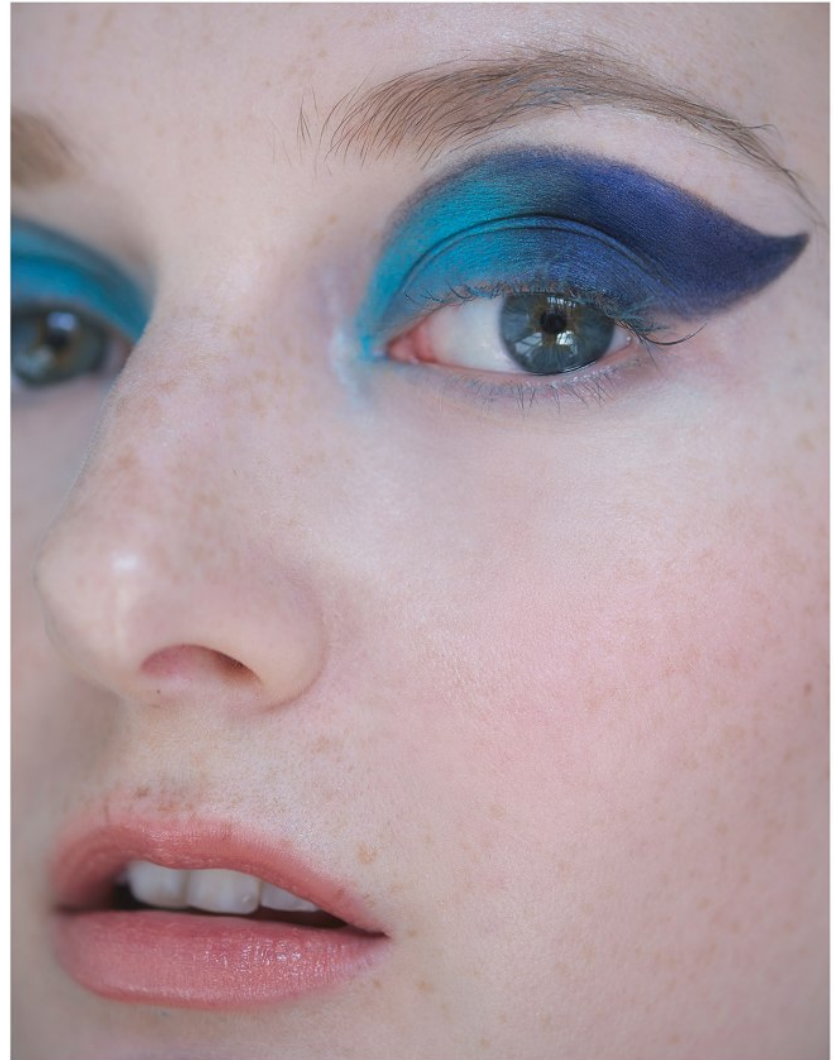
# FENTON

MODEL MANAGEMENT



## REBECCA

Height: 5'10" Dress: 2 US Bust: 32" Waist: 23.5" Hips: 35.5" Shoes: 8 US Hair: Auburn Red Eyes: Green



**REBECCA**

Height: 5'10" Dress: 2 US Bust: 32" Waist: 23.5" Hips: 35.5" Shoes: 8 US Hair: Auburn Red Eyes: Green

*FENTON*  
*MODEL MANAGEMENT*



*REBECCA*

Height: 5'10" Dress: 2 US Bust: 32" Waist: 23.5" Hips: 35.5" Shoes: 8 US Hair: Auburn Red Eyes: Green

*FENTON*  
MODEL MANAGEMENT



*REBECCA*

Height: 5'10" Dress: 2 US Bust: 32" Waist: 23.5" Hips: 35.5" Shoes: 8 US Hair: Auburn Red Eyes: Green

# FENTON

MODEL MANAGEMENT

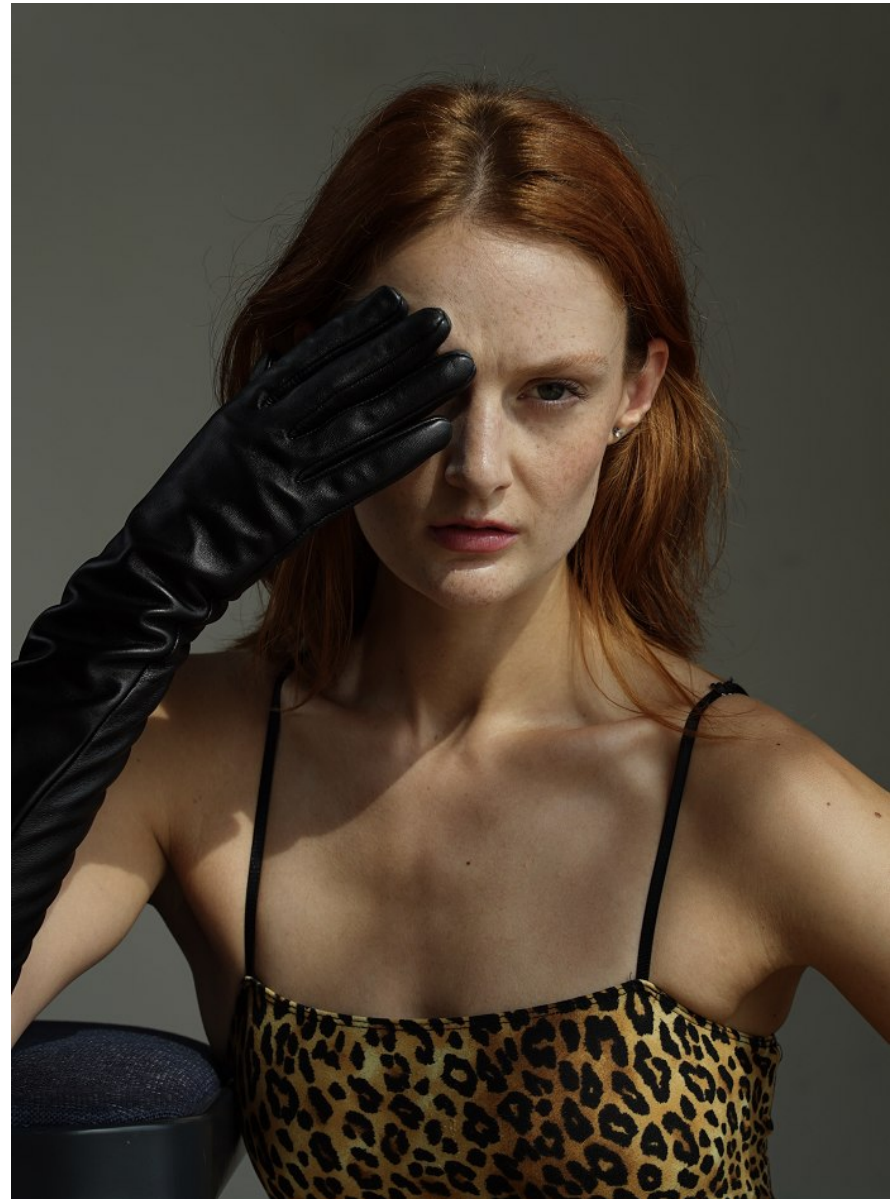


## REBECCA

Height: 5'10" Dress: 2 US Bust: 32" Waist: 23.5" Hips: 35.5" Shoes: 8 US Hair: Auburn Red Eyes: Green

# FENTON

MODEL MANAGEMENT



## REBECCA

Height: 5'10" Dress: 2 US Bust: 32" Waist: 23.5" Hips: 35.5" Shoes: 8 US Hair: Auburn Red Eyes: Green

*FENTON*  
MODEL MANAGEMENT



*REBECCA*

Height: 5'10" Dress: 2 US Bust: 32" Waist: 23.5" Hips: 35.5" Shoes: 8 US Hair: Auburn Red Eyes: Green



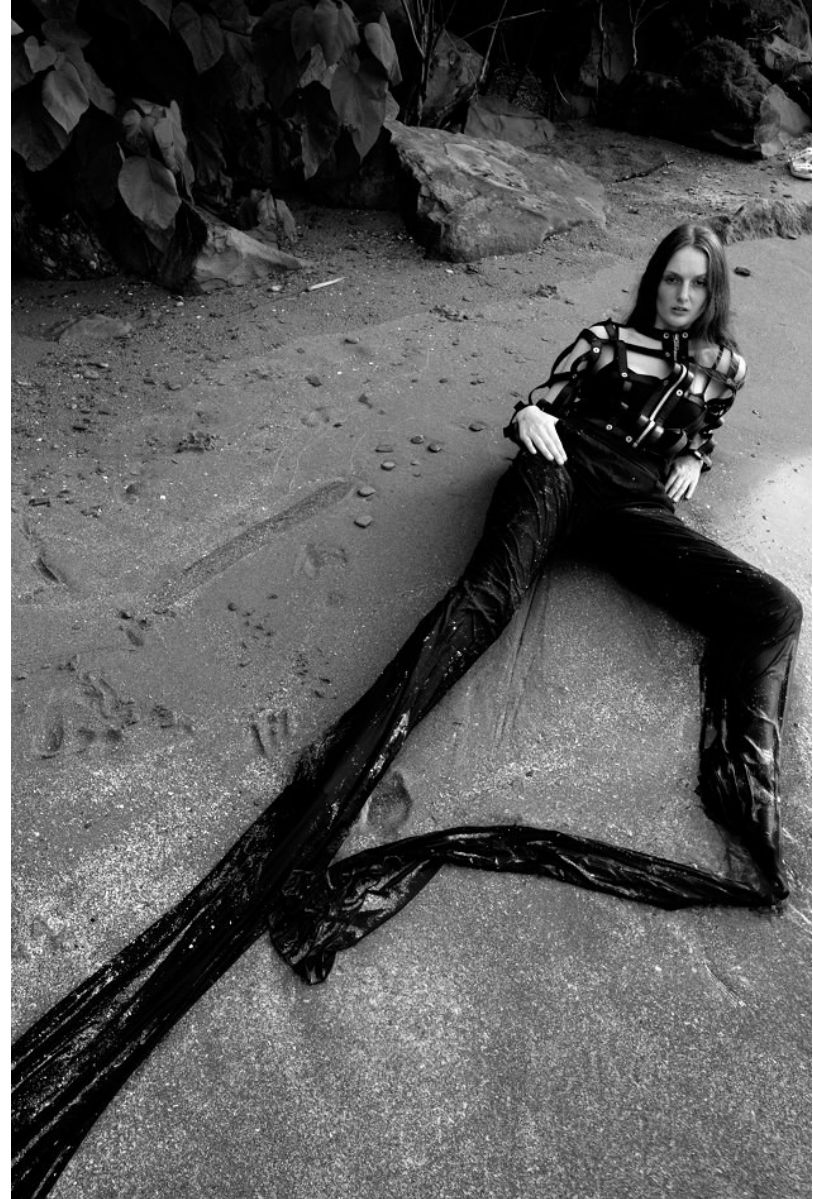
*FENTON*  
*MODEL MANAGEMENT*



*REBECCA*

Height: 5'10" Dress: 2 US Bust: 32" Waist: 23.5" Hips: 35.5" Shoes: 8 US Hair: Auburn Red Eyes: Green

*FENTON*  
MODEL MANAGEMENT



*REBECCA*

Height: 5'10" Dress: 2 US Bust: 32" Waist: 23.5" Hips: 35.5" Shoes: 8 US Hair: Auburn Red Eyes: Green

*FENTON*  
MODEL MANAGEMENT



*REBECCA*

Height: 5'10" Dress: 2 US Bust: 32" Waist: 23.5" Hips: 35.5" Shoes: 8 US Hair: Auburn Red Eyes: Green

*FENTON*  
MODEL MANAGEMENT



*REBECCA*

Height: 5'10" Dress: 2 US Bust: 32" Waist: 23.5" Hips: 35.5" Shoes: 8 US Hair: Auburn Red Eyes: Green

*FENTON*  
*MODEL MANAGEMENT*



*REBECCA*

Height: 5'10" Dress: 2 US Bust: 32" Waist: 23.5" Hips: 35.5" Shoes: 8 US Hair: Auburn Red Eyes: Green

*FENTON*  
*MODEL MANAGEMENT*



*REBECCA*

Height: 5'10" Dress: 2 US Bust: 32" Waist: 23.5" Hips: 35.5" Shoes: 8 US Hair: Auburn Red Eyes: Green

*FENTON*  
MODEL MANAGEMENT



*REBECCA*

Height: 5'10" Dress: 2 US Bust: 32" Waist: 23.5" Hips: 35.5" Shoes: 8 US Hair: Auburn Red Eyes: Green