

# FENTON

MODEL MANAGEMENT



## ALY RAE

Height: 5'7" Dress: 2 US Bust: 32" Waist: 23" Hips: 33" Shoes: 6.5 US Hair: Red Eyes: Hazel



# FENTON

MODEL MANAGEMENT



GOJI



Dress - GIGI  
Beauty - Mijnt



Into The Woods

ISSUE 11  
**GOJI**  
VOL. 1 2021



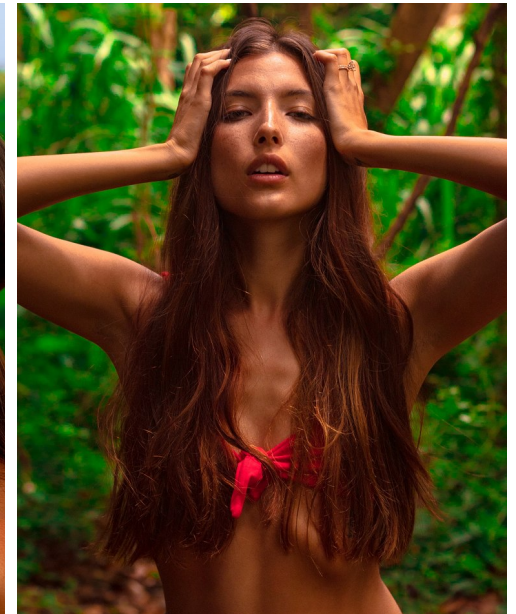
Photographer: Gabriel Parra  
Wardrobe Stylist: Diana Oleguin  
Hair & Makeup: Carolina Yastukawa  
Hair Stylist: Amber Valdez  
Model: Aly Rae Santos-Tanner @Otto Models

*Into The Woods*

GOJI



Ranger - Topshop



## ALY RAE

Height: 5'7" Dress: 2 US Bust: 32" Waist: 23" Hips: 33" Shoes: 6.5 US Hair: Red Eyes: Hazel



# FENTON

MODEL MANAGEMENT



## ALY RAE

Height: 5'7" Dress: 2 US Bust: 32" Waist: 23" Hips: 33" Shoes: 6.5 US Hair: Red Eyes: Hazel



# FENTON

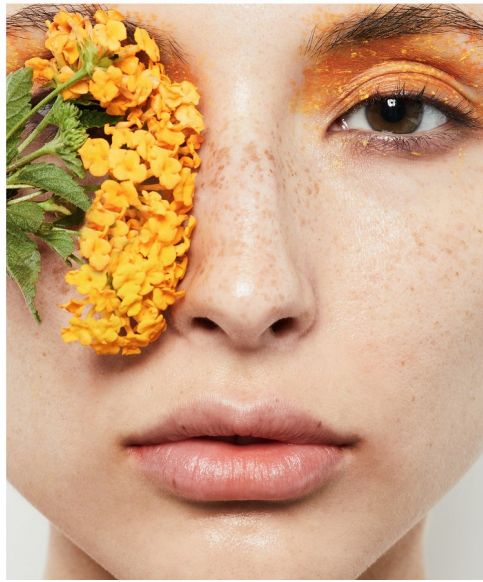
MODEL MANAGEMENT



L'OFFICIEL



L'OFFICIEL



L'OFFICIEL



*ALY RAE*

Height: 5'7" Dress: 2 US Bust: 32" Waist: 23" Hips: 33" Shoes: 6.5 US Hair: Red Eyes: Hazel



# FENTON

MODEL MANAGEMENT



## *ALY RAE*

Height: 5'7" Dress: 2 US Bust: 32" Waist: 23" Hips: 33" Shoes: 6.5 US Hair: Red Eyes: Hazel