

FENTON
MODEL MANAGEMENT



NADINE

Height: 5'9.5" Dress: 2 US Bust: 32" Waist: 24" Hips: 36.5" Shoes: 8 US Hair: Brown Eyes: Brown

FENTON
MODEL MANAGEMENT



NADINE

Height: 5'9.5" Dress: 2 US Bust: 32" Waist: 24" Hips: 36.5" Shoes: 8 US Hair: Brown Eyes: Brown

FENTON
MODEL MANAGEMENT



NADINE

Height: 5'9.5" Dress: 2 US Bust: 32" Waist: 24" Hips: 36.5" Shoes: 8 US Hair: Brown Eyes: Brown

FENTON
MODEL MANAGEMENT

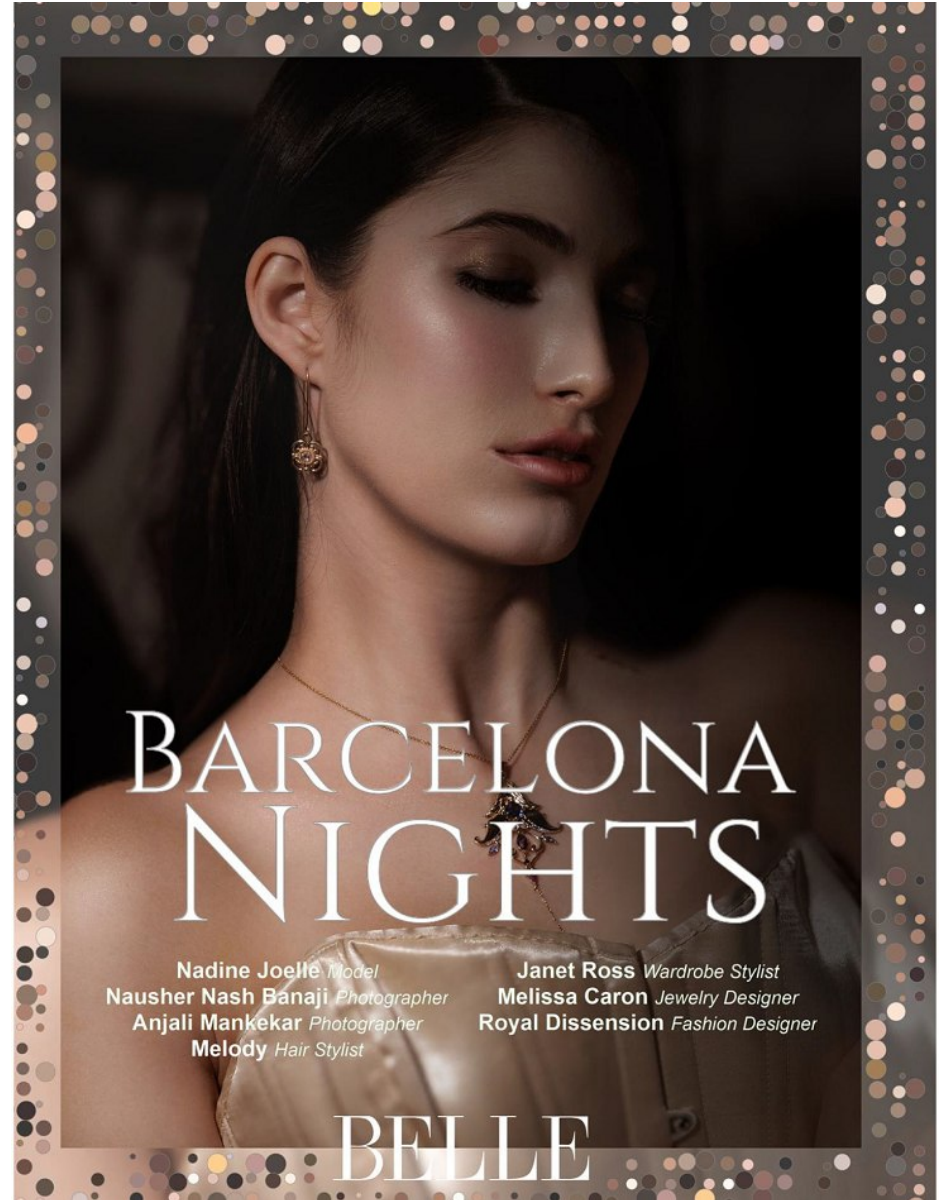


NADINE

Height: 5'9.5" Dress: 2 US Bust: 32" Waist: 24" Hips: 36.5" Shoes: 8 US Hair: Brown Eyes: Brown

FENTON

MODEL MANAGEMENT



NADINE

Height: 5'9.5" Dress: 2 US Bust: 32" Waist: 24" Hips: 36.5" Shoes: 8 US Hair: Brown Eyes: Brown



BELLE

BELLE

Bellezza

DISCO FIRE
Kelly Model
Alexojan Photographer
Nicole Creative Director
Yu Makeup Artist
Hui Hair Stylist

CLASSY LINGERIE
Sharon Laird Model
Andy Marshall Photographer

20TH CENTURY
Полина Балаш Model
Leapenka Maryia Photographer
Anya Davydenko Hair Stylist
Ina Batura Wardrobe Stylist

NOTHING IS FOREVER
Natalia La Serrata Model
Fernando López Foto Photographer
Manuela Vergara Makeup Artist

LADY IN RED
Viktoria Kostrova Model
Svet LANA Konstantinova Photographer

SCOMEWHERE ELSE TO GO
Haley Jacobson Model
Foto Blend Photographer

MILANO FASHION
GLOBAL FASHION
Giustino Fani Photographer
Milano Fashion Event

CANNES
Oleksandra Starynets Model

BARCELONA NIGHTS
Nadine Joelle Model
Nausher Nash Banaji Photographer
Anjali Mankekar Photographer
Melody Hair Stylist
Janet Ross Wardrobe Stylist
Melissa Caron Jewelry Designer
Royal Dissension Fashion Designer

CHELSEA IN STUDIO
Chelsea Sanchez Model
Photography Shark Studios Photographer

Cover : Nadine Joelle
by Nausher Nash Banaji
Anjali Mankekar

TIMELESS FASHION & BEAUTY
29
DIGITAL & PRINT belle.influzz.com
66 PAGES
November 2023

43

NADINE

Height: 5'9.5" Dress: 2 US Bust: 32" Waist: 24" Hips: 36.5" Shoes: 8 US Hair: Brown Eyes: Brown

FENTON
MODEL MANAGEMENT



NADINE

Height: 5'9.5" Dress: 2 US Bust: 32" Waist: 24" Hips: 36.5" Shoes: 8 US Hair: Brown Eyes: Brown

FENTON

MODEL MANAGEMENT

TANGERINE VIBE

PHOTOGRAPHY: + STYLING + HAIR: LIZ DUNGATE
MODEL: NADINE
AGENCY: LIZBELL AGENCY
MAKEUP: JANA BIZZARRI
LOCATION: VANCOUVER, B.C.



16

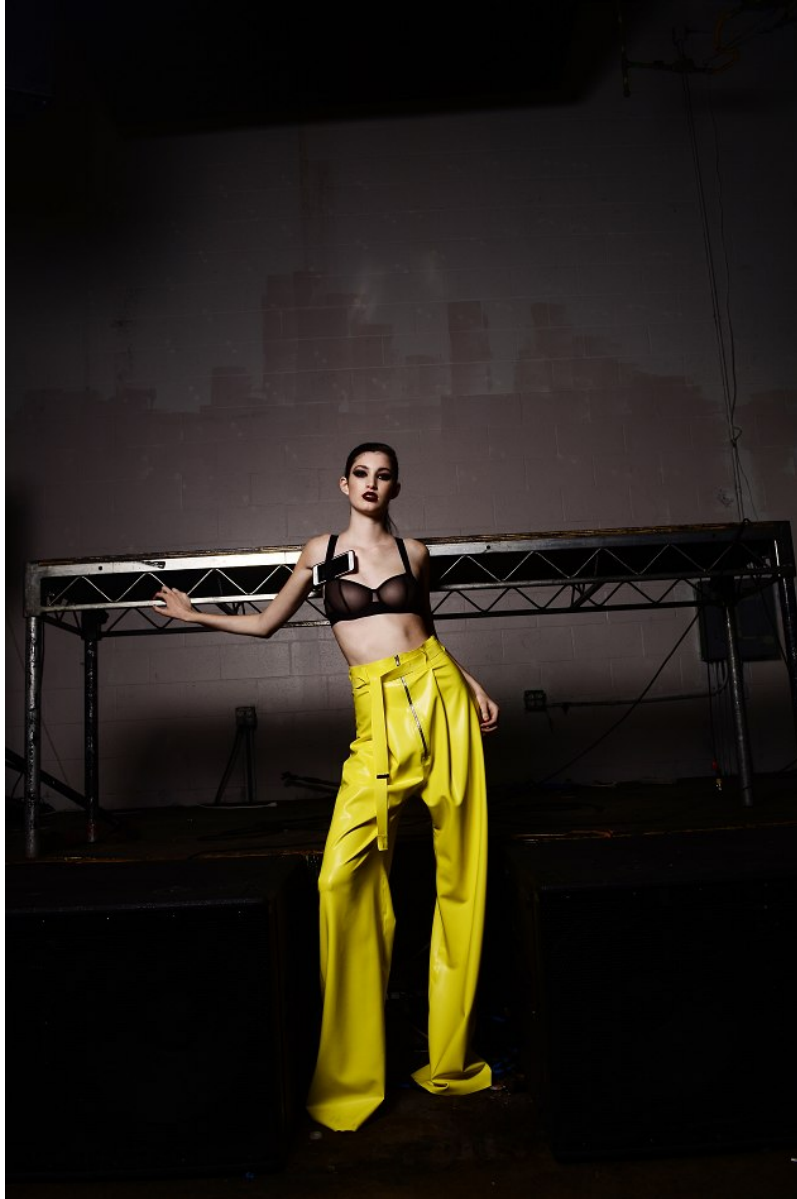


NADINE

Height: 5'9.5" Dress: 2 US Bust: 32" Waist: 24" Hips: 36.5" Shoes: 8 US Hair: Brown Eyes: Brown

FENTON

MODEL MANAGEMENT



NADINE

Height: 5'9.5" Dress: 2 US Bust: 32" Waist: 24" Hips: 36.5" Shoes: 8 US Hair: Brown Eyes: Brown

FENTON
MODEL MANAGEMENT



NADINE

Height: 5'9.5" Dress: 2 US Bust: 32" Waist: 24" Hips: 36.5" Shoes: 8 US Hair: Brown Eyes: Brown

FENTON

MODEL MANAGEMENT



NADINE

Height: 5'9.5" Dress: 2 US Bust: 32" Waist: 24" Hips: 36.5" Shoes: 8 US Hair: Brown Eyes: Brown

FENTON

MODEL MANAGEMENT



NADINE

Height: 5'9.5" Dress: 2 US Bust: 32" Waist: 24" Hips: 36.5" Shoes: 8 US Hair: Brown Eyes: Brown

FENTON
MODEL MANAGEMENT



NADINE

Height: 5'9.5" Dress: 2 US Bust: 32" Waist: 24" Hips: 36.5" Shoes: 8 US Hair: Brown Eyes: Brown

FENTON
MODEL MANAGEMENT



NADINE

Height: 5'9.5" Dress: 2 US Bust: 32" Waist: 24" Hips: 36.5" Shoes: 8 US Hair: Brown Eyes: Brown

FENTON
MODEL MANAGEMENT



NADINE

Height: 5'9.5" Dress: 2 US Bust: 32" Waist: 24" Hips: 36.5" Shoes: 8 US Hair: Brown Eyes: Brown

FENTON
MODEL MANAGEMENT



NADINE

Height: 5'9.5" Dress: 2 US Bust: 32" Waist: 24" Hips: 36.5" Shoes: 8 US Hair: Brown Eyes: Brown

FENTON
MODEL MANAGEMENT



NADINE

Height: 5'9.5" Dress: 2 US Bust: 32" Waist: 24" Hips: 36.5" Shoes: 8 US Hair: Brown Eyes: Brown

FENTON
MODEL MANAGEMENT



NADINE

Height: 5'9.5" Dress: 2 US Bust: 32" Waist: 24" Hips: 36.5" Shoes: 8 US Hair: Brown Eyes: Brown

FENTON
MODEL MANAGEMENT



NADINE

Height: 5'9.5" Dress: 2 US Bust: 32" Waist: 24" Hips: 36.5" Shoes: 8 US Hair: Brown Eyes: Brown

FENTON
MODEL MANAGEMENT



NADINE

Height: 5'9.5" Dress: 2 US Bust: 32" Waist: 24" Hips: 36.5" Shoes: 8 US Hair: Brown Eyes: Brown