

FENTON

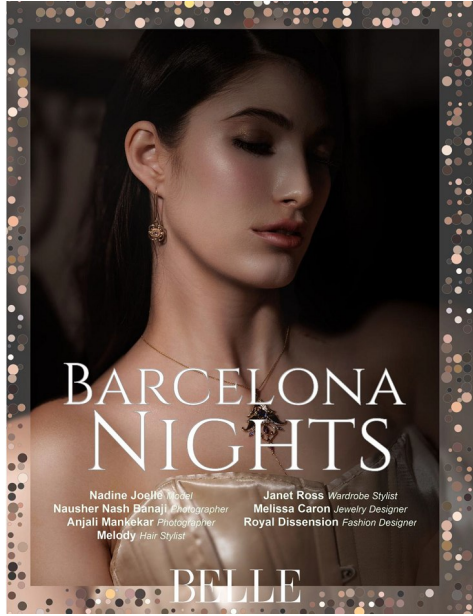
MODEL MANAGEMENT



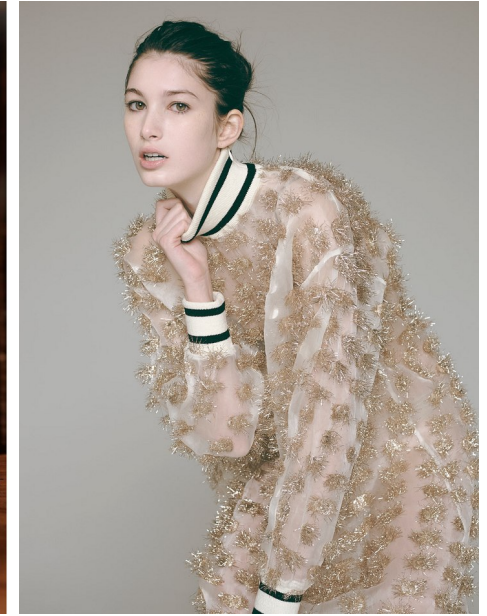
NADINE

Height: 5'9.5" Dress: 2 US Bust: 32" Waist: 24" Hips: 36.5" Shoes: 8 US Hair: Brown Eyes: Brown

FENTON MODEL MANAGEMENT

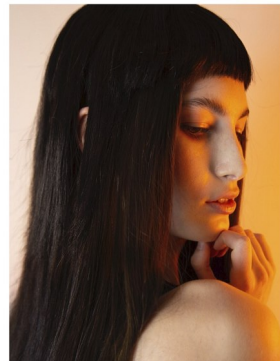


BELLE

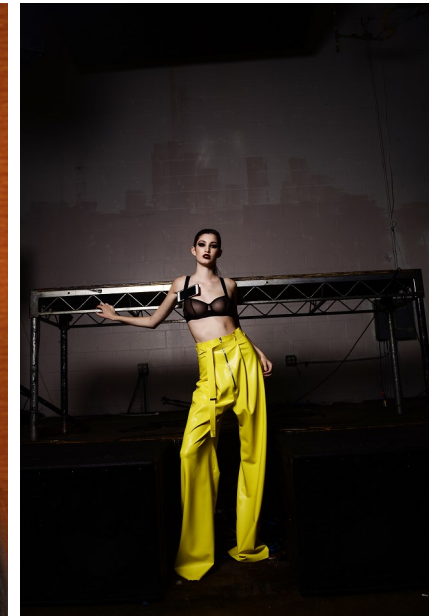


TANGERINE VIBE

PHOTOGRAPHY + STYLING + HAIR: LIZ DUNGATE
MODEL: NADINE
AGENCY: LIZBELL AGENCY
MAKEUP: JANA BIZZARBI
LOCATION: VANCOUVER, B.C.



16



NADINE

Height: 5'9.5" Dress: 2 US Bust: 32" Waist: 24" Hips: 36.5" Shoes: 8 US Hair: Brown Eyes: Brown

FENTON

MODEL MANAGEMENT



Dress - ANGELIN



Dress - QUINCY WANG



Cape and corset - QUINCY WANG



Trousers and corset - QUINCY WANG

NADINE

Height: 5'9.5" Dress: 2 US Bust: 32" Waist: 24" Hips: 36.5" Shoes: 8 US Hair: Brown Eyes: Brown

FENTON

MODEL MANAGEMENT



NADINE

Height: 5'9.5" Dress: 2 US Bust: 32" Waist: 24" Hips: 36.5" Shoes: 8 US Hair: Brown Eyes: Brown

FENTON

MODEL MANAGEMENT



NADINE

Height: 5'9.5" Dress: 2 US Bust: 32" Waist: 24" Hips: 36.5" Shoes: 8 US Hair: Brown Eyes: Brown