

FENTON
MODEL MANAGEMENT



BRIDIE

Height: 5'9" Dress: 2-4 US Bust: 31" Waist: 25" Hips: 36" Shoes: 7 US Hair: Brown Eyes: Blue

FENTON

MODEL MANAGEMENT



BRIDIE

Height: 5'9" Dress: 2-4 US Bust: 31" Waist: 25" Hips: 36" Shoes: 7 US Hair: Brown Eyes: Blue

FENTON
MODEL MANAGEMENT



BRIDIE

Height: 5'9" Dress: 2-4 US Bust: 31" Waist: 25" Hips: 36" Shoes: 7 US Hair: Brown Eyes: Blue

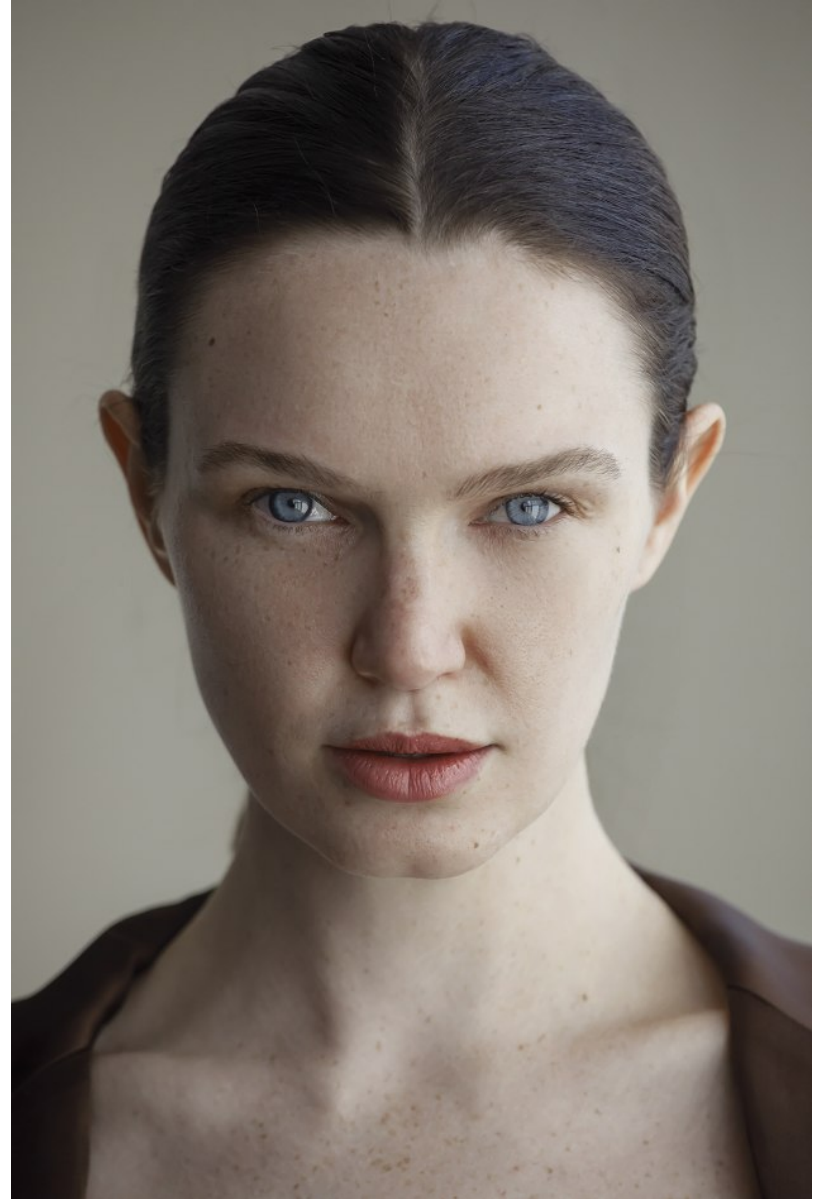
FENTON
MODEL MANAGEMENT



BRIDIE

Height: 5'9" Dress: 2-4 US Bust: 31" Waist: 25" Hips: 36" Shoes: 7 US Hair: Brown Eyes: Blue

FENTON
MODEL MANAGEMENT



BRIDIE

Height: 5'9" Dress: 2-4 US Bust: 31" Waist: 25" Hips: 36" Shoes: 7 US Hair: Brown Eyes: Blue

FENTON
MODEL MANAGEMENT



BRIDIE

Height: 5'9" Dress: 2-4 US Bust: 31" Waist: 25" Hips: 36" Shoes: 7 US Hair: Brown Eyes: Blue

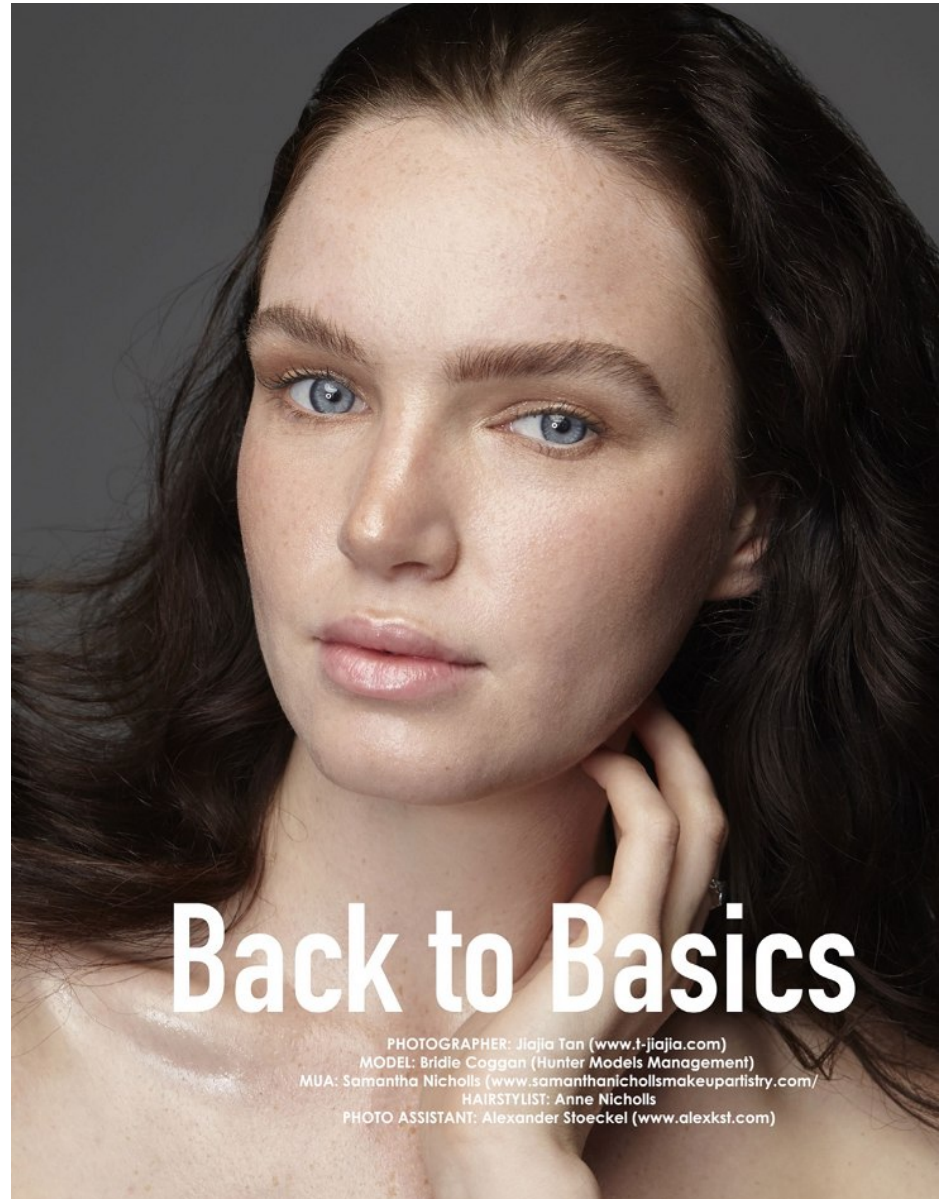
FENTON

MODEL MANAGEMENT



BRIDIE

Height: 5'9" Dress: 2-4 US Bust: 31" Waist: 25" Hips: 36" Shoes: 7 US Hair: Brown Eyes: Blue



BRIDIE

Height: 5'9" Dress: 2-4 US Bust: 31" Waist: 25" Hips: 36" Shoes: 7 US Hair: Brown Eyes: Blue

FENTON
MODEL MANAGEMENT



BRIDIE

Height: 5'9" Dress: 2-4 US Bust: 31" Waist: 25" Hips: 36" Shoes: 7 US Hair: Brown Eyes: Blue

FENTON

MODEL MANAGEMENT



BEAUTY



*Wearing Body-con Black Dress
from River Island*

*Face: Mac face and body
BRONZER Nars Laguna
Blush Nars Orgasm
Mascara: Scramptious Etice
Lauder
MAC Eyebrow Gel
Bobbie Brown Longwear Brow
Pencil
Concealer YSL #2
Eyeshadow: Becca Glow palette
Red Carpet red with a MAC
red lip liner*

ELEGANT 7

BRIDIE

Height: 5'9" Dress: 2-4 US Bust: 31" Waist: 25" Hips: 36" Shoes: 7 US Hair: Brown Eyes: Blue

FENTON

MODEL MANAGEMENT



BRIDIE

Height: 5'9" Dress: 2-4 US Bust: 31" Waist: 25" Hips: 36" Shoes: 7 US Hair: Brown Eyes: Blue

BEAUTY *Eléments*

ORIENTAL Assimilation

Photographed by **ELIZABETH GRINTER**
Fashion Stylist: **RIELY SAVILLE @ EPIC CREATIONS**
Hair and Makeup Artist: **SAMARA NILSSON**
Model: **BRIDIE COGGAN @ HUNTER MODEL MANAGEMENT AND DALLYS MODELS**

52 ELÉMENTS MAGAZINE.COM

Starting Page -
JAPANESE YUKATA - VINTAGE, CHOP-
STICKS - VUE
EARRINGS - JEAN MARIE POINOT,
RING - LOVISA

MAKEUP:
BASE: ELEMENT 2 FOUNDATION
"COLOUR 3", MAC COMPACT POWDER
IN "NC 15"
CHEEK: MAC MELBA, MAC ROSY
OUTLOOK, MAC SOFT AND GENTLE
MINERALIZE SKINFINISH, GORGEOUS
COSMETICS ENDLESS SUMMER
BRONZER
EYES: GORGEOUS COSMETICS SAND
SHIMMER, RIMMEL MAX VOLUME
MASCARA, VANITY MARK BLONDEST,
VANITY MARK MILK CHOCO
LIP: GORGEOUS COSMETICS "MAN-
HATTAN" PENCIL, MAC "ENDLESS
DREAM" PRO-LONG WEAR LIP STICK,
MAC CLEAR LIP GLASS
NAIL: OPI GLITZERLAND, OPI ONYX

This Page -
JACKET - BROADWAY
CHOPSTICKS - VUE
EARRINGS & RING - LOVISA

MAKEUP:
BASE: ELEMENT 2 FOUNDATION
"COLOUR 3", MAC COMPACT POWDER
IN "NC 15"
CHEEK: MAC SOFT AND GENTLE
MINERALIZE SKINFINISH, TEMPTU
"CORAL" AQUA PAINT
EYES: GORGEOUS COSMETICS SAND
SHIMMER, RIMMEL MAX VOLUME
MASCARA, VANITY MARK MILK
CHOCO, MAC CLEAR LIP GLASS, MAC
FLUIDLINE GEL LINER, RED CHERRY
217 LASH
LIP: LIME CRIME SUEDEBERRY VEL-
VETINE

ELÉMENTS MAGAZINE.COM 53

BRIDIE

Height: 5'9" Dress: 2-4 US Bust: 31" Waist: 25" Hips: 36" Shoes: 7 US Hair: Brown Eyes: Blue

FENTON
MODEL MANAGEMENT



BRIDIE

Height: 5'9" Dress: 2-4 US Bust: 31" Waist: 25" Hips: 36" Shoes: 7 US Hair: Brown Eyes: Blue

FENTON
MODEL MANAGEMENT

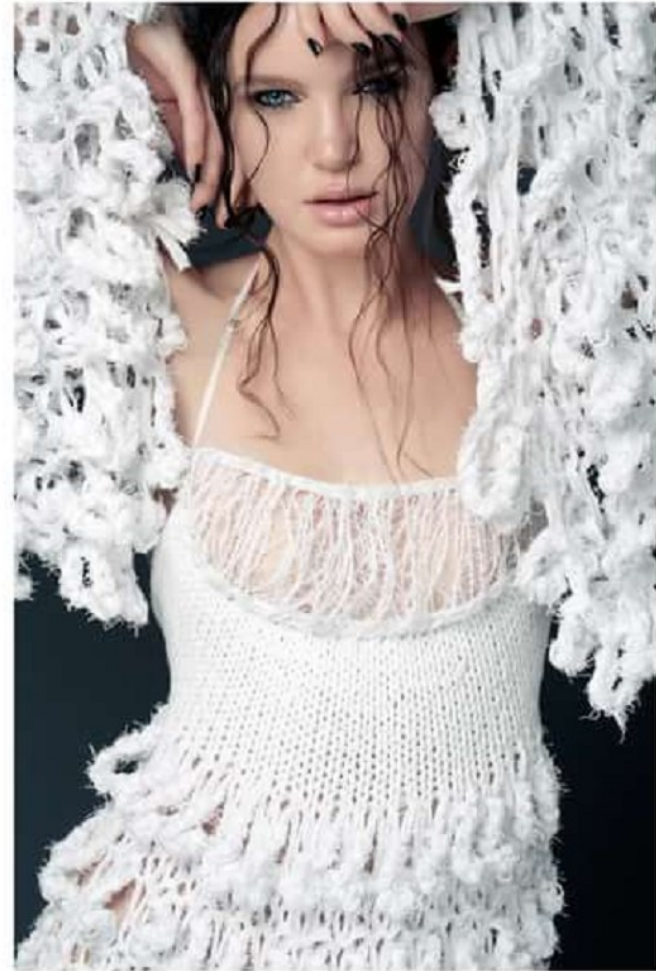


BRIDIE

Height: 5'9" Dress: 2-4 US Bust: 31" Waist: 25" Hips: 36" Shoes: 7 US Hair: Brown Eyes: Blue

FENTON

MODEL MANAGEMENT



FASHION

19

VIDEOGRAPHER/PHOTOGRAPHER: PRASH UPPAL
FASHION DESIGNER: WEARABLEART BY SAPHIRE (SAPHIRE GASKAN)
MODEL: BRIDIE COGGAN @BELLA MANAGEMENT
WARDROBE STYLIST/CREATIVE DIRECTOR/MUAH: ALICIA KAER

BRIDIE

Height: 5'9" Dress: 2-4 US Bust: 31" Waist: 25" Hips: 36" Shoes: 7 US Hair: Brown Eyes: Blue

FENTON
MODEL MANAGEMENT



BRIDIE

Height: 5'9" Dress: 2-4 US Bust: 31" Waist: 25" Hips: 36" Shoes: 7 US Hair: Brown Eyes: Blue

FENTON
MODEL MANAGEMENT



BRIDIE

Height: 5'9" Dress: 2-4 US Bust: 31" Waist: 25" Hips: 36" Shoes: 7 US Hair: Brown Eyes: Blue