

*FENTON*  
*MODEL MANAGEMENT*



*LAURYN B*

Height: 5'10" Dress: 2-4 US Bust: 32" Waist: 25" Hips: 35" Shoes: 10.5 US Hair: Brown Eyes: Brown

*FENTON*  
MODEL MANAGEMENT



*LAURYN B*

Height: 5'10" Dress: 2-4 US Bust: 32" Waist: 25" Hips: 35" Shoes: 10.5 US Hair: Brown Eyes: Brown

*FENTON*  
*MODEL MANAGEMENT*



*LAURYN B*

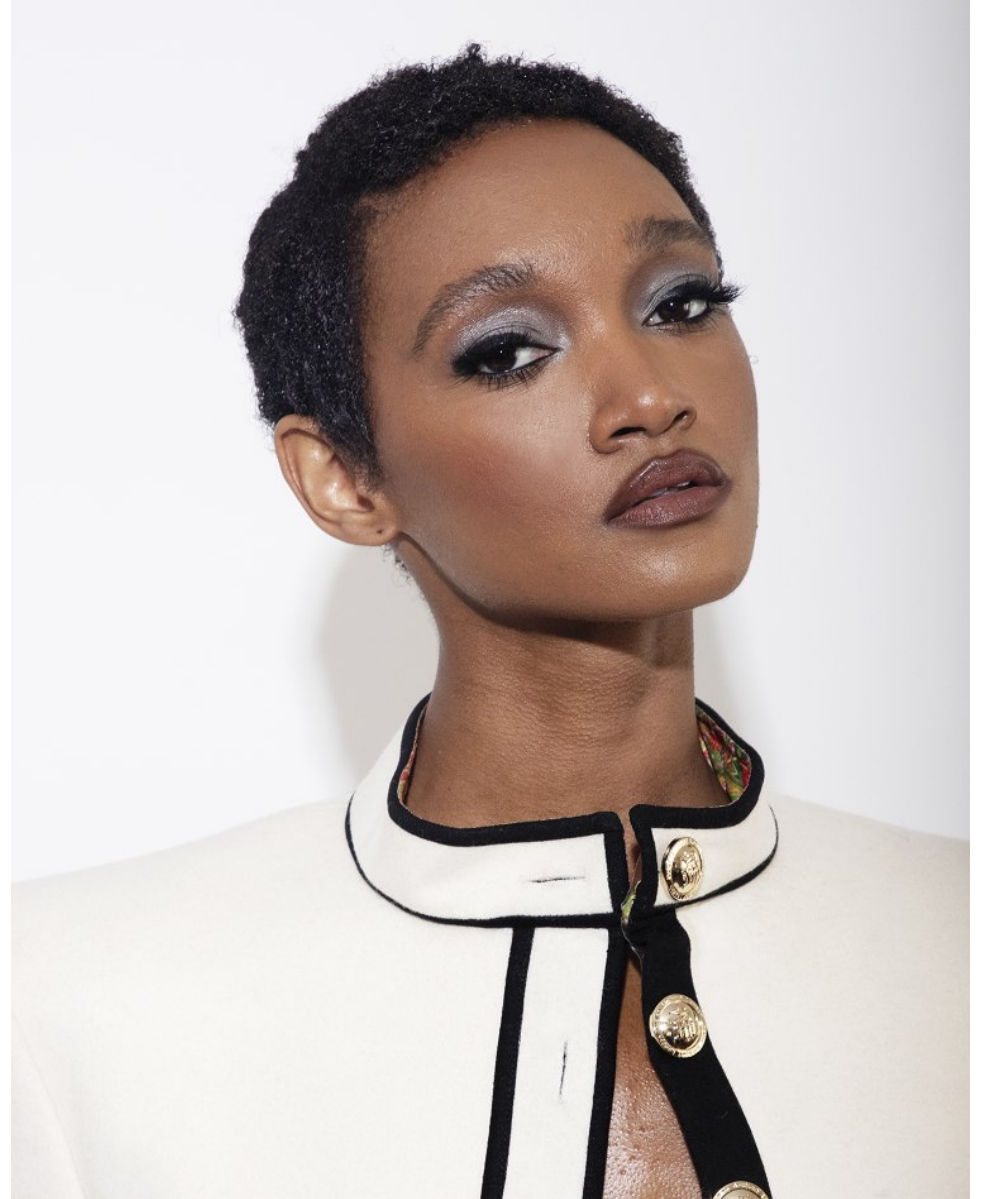
Height: 5'10" Dress: 2-4 US Bust: 32" Waist: 25" Hips: 35" Shoes: 10.5 US Hair: Brown Eyes: Brown

# FENTON

MODEL MANAGEMENT



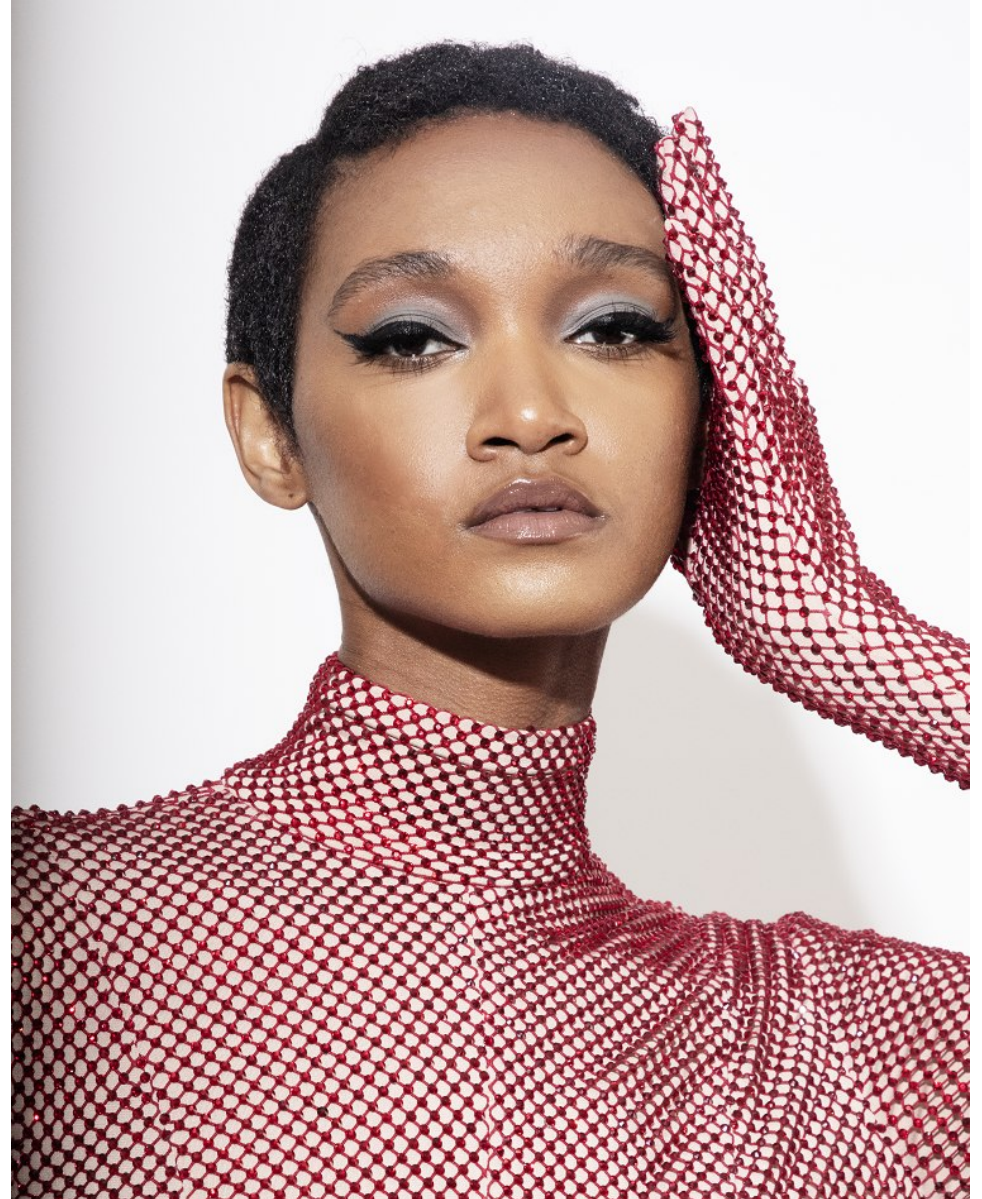
*Jacket & Shorts by Helen Anthony  
Shoes by Jimmy Choo*



## LAURYN B

Height: 5'10" Dress: 2-4 US Bust: 32" Waist: 25" Hips: 35" Shoes: 10.5 US Hair: Brown Eyes: Brown

*FENTON*  
*MODEL MANAGEMENT*



*LAURYN B*

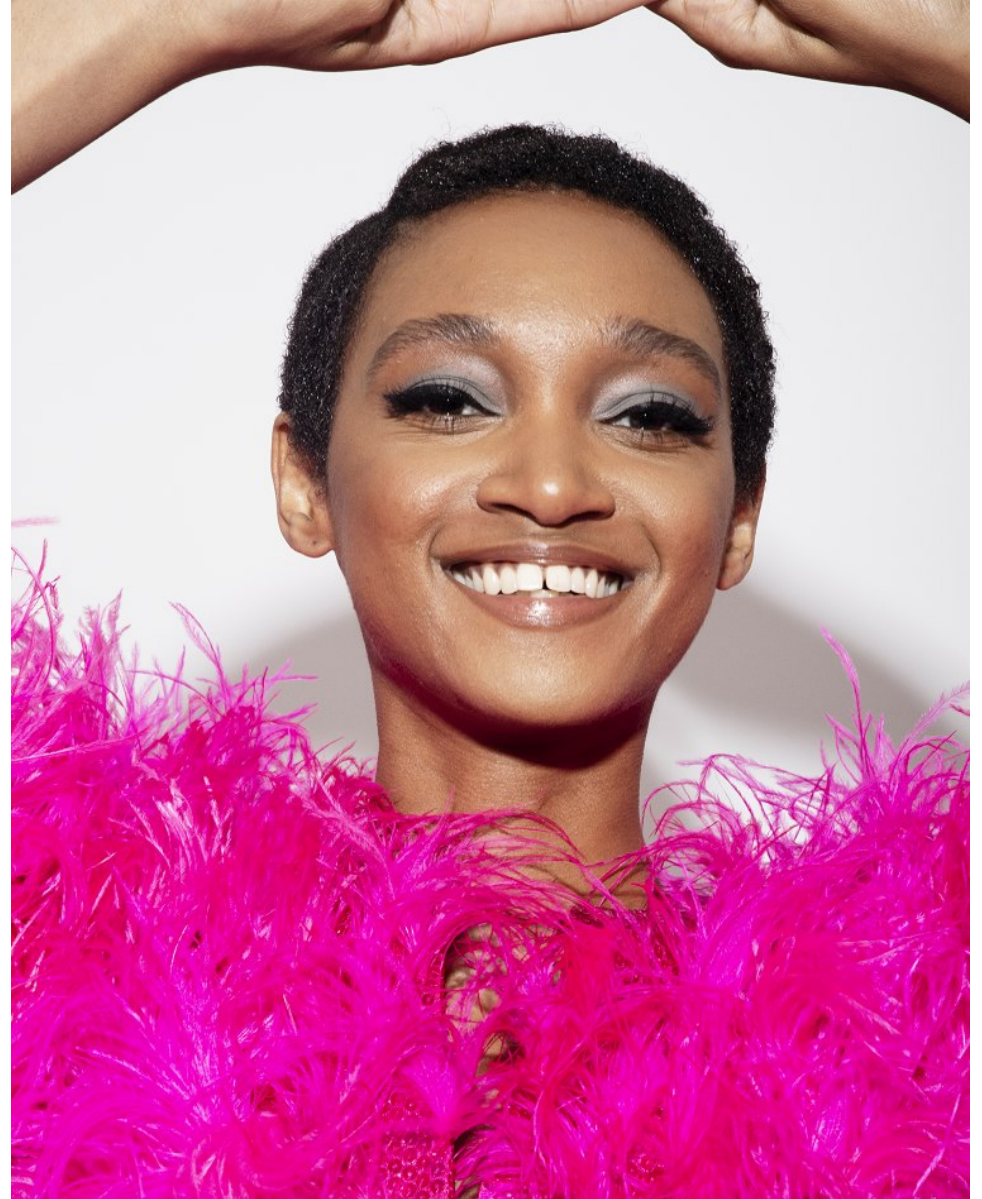
Height: 5'10" Dress: 2-4 US Bust: 32" Waist: 25" Hips: 35" Shoes: 10.5 US Hair: Brown Eyes: Brown

# FENTON

MODEL MANAGEMENT



Top by Le Thanh Hoa  
Tights by Wolford  
Shoes by Amina Muaddi



*LAURYN B*

Height: 5'10" Dress: 2-4 US Bust: 32" Waist: 25" Hips: 35" Shoes: 10.5 US Hair: Brown Eyes: Brown

**FENTON**  
MODEL MANAGEMENT

***Sensation***

Photographer: Mark Oberlin



Stylist: Dion "Bleu" Drake  
Makeup: Christopher Miles using Sunday Riley and Nars  
Hair: George Fragkioudakis using Unite products  
Model: Lauryn Butler with State Management  
Styling Assistant- Latasha Cameron

*Catsuit by Le Thanh Hoa*

***LAURYN B***

Height: 5'10" Dress: 2-4 US Bust: 32" Waist: 25" Hips: 35" Shoes: 10.5 US Hair: Brown Eyes: Brown

*FENTON*  
*MODEL MANAGEMENT*



*LAURYN B*

Height: 5'10" Dress: 2-4 US Bust: 32" Waist: 25" Hips: 35" Shoes: 10.5 US Hair: Brown Eyes: Brown



*FENTON*  
MODEL MANAGEMENT



*LAURYN B*

Height: 5'10" Dress: 2-4 US Bust: 32" Waist: 25" Hips: 35" Shoes: 10.5 US Hair: Brown Eyes: Brown

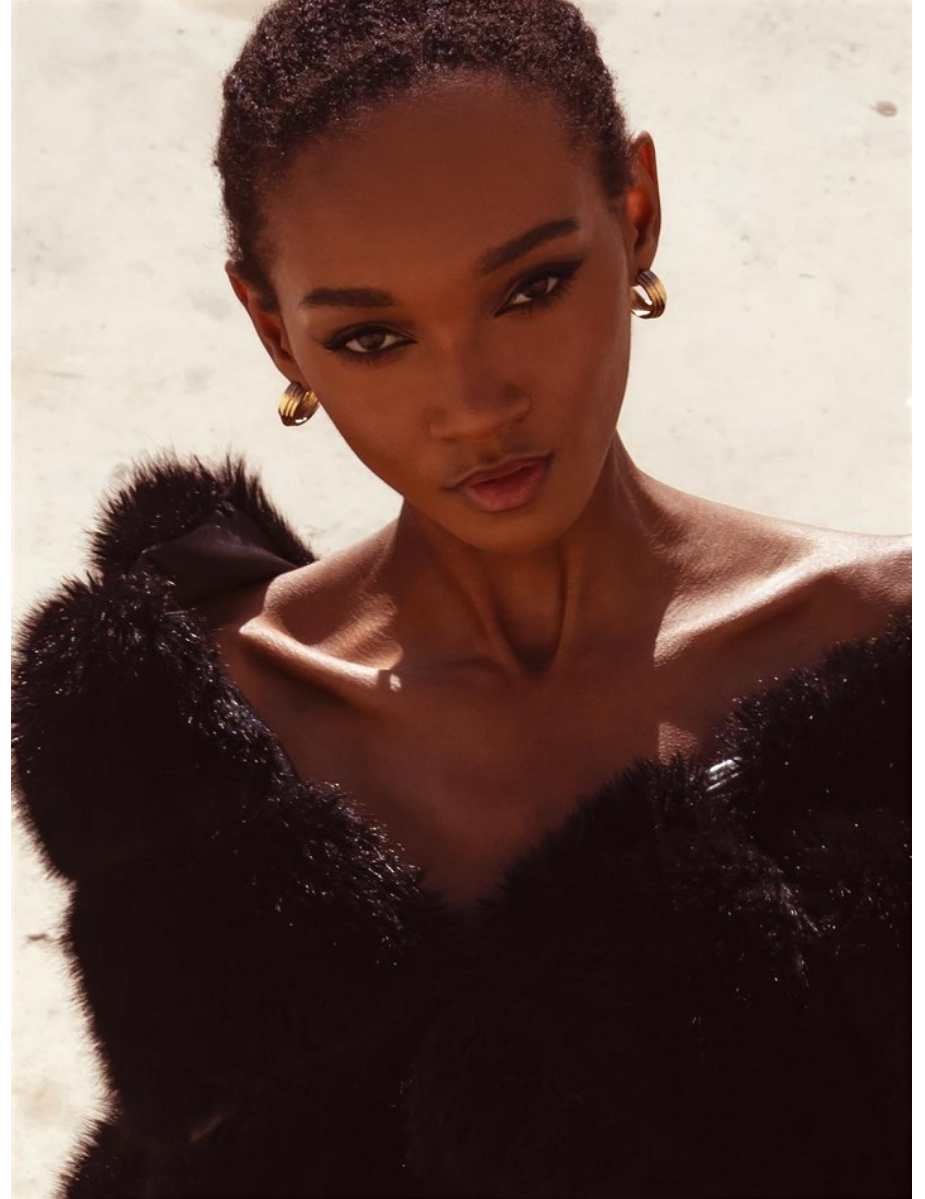
*FENTON*  
MODEL MANAGEMENT



*LAURYN B*

Height: 5'10" Dress: 2-4 US Bust: 32" Waist: 25" Hips: 35" Shoes: 10.5 US Hair: Brown Eyes: Brown

*FENTON*  
*MODEL MANAGEMENT*



*LAURYN B*

Height: 5'10" Dress: 2-4 US Bust: 32" Waist: 25" Hips: 35" Shoes: 10.5 US Hair: Brown Eyes: Brown

*FENTON*  
*MODEL MANAGEMENT*



*LAURYN B*

Height: 5'10" Dress: 2-4 US Bust: 32" Waist: 25" Hips: 35" Shoes: 10.5 US Hair: Brown Eyes: Brown

*FENTON*  
MODEL MANAGEMENT



*LAURYN B*

Height: 5'10" Dress: 2-4 US Bust: 32" Waist: 25" Hips: 35" Shoes: 10.5 US Hair: Brown Eyes: Brown

*FENTON*  
MODEL MANAGEMENT



*LAURYN B*

Height: 5'10" Dress: 2-4 US Bust: 32" Waist: 25" Hips: 35" Shoes: 10.5 US Hair: Brown Eyes: Brown

*FENTON*  
*MODEL MANAGEMENT*



*LAURYN B*

Height: 5'10" Dress: 2-4 US Bust: 32" Waist: 25" Hips: 35" Shoes: 10.5 US Hair: Brown Eyes: Brown

*FENTON*  
*MODEL MANAGEMENT*



*LAURYN B*

Height: 5'10" Dress: 2-4 US Bust: 32" Waist: 25" Hips: 35" Shoes: 10.5 US Hair: Brown Eyes: Brown