

FENTON

MODEL MANAGEMENT

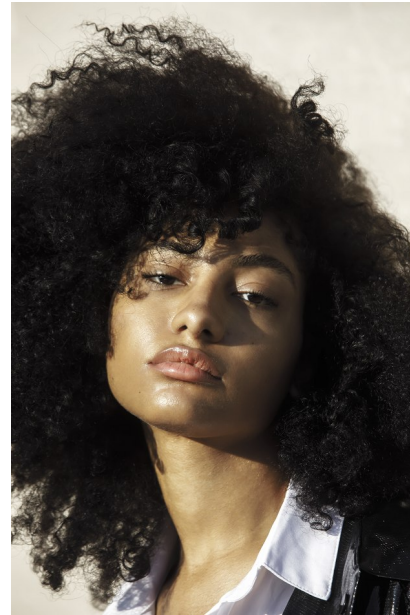


BETHANY CHASTEEN

Height: 5'8" Dress: 2 US Bust: 32" Waist: 24" Hips: 35.5" Shoes: 8 US Hair: Brown Eyes: Brown

FENTON

MODEL MANAGEMENT



BETHANY CHASTEEN

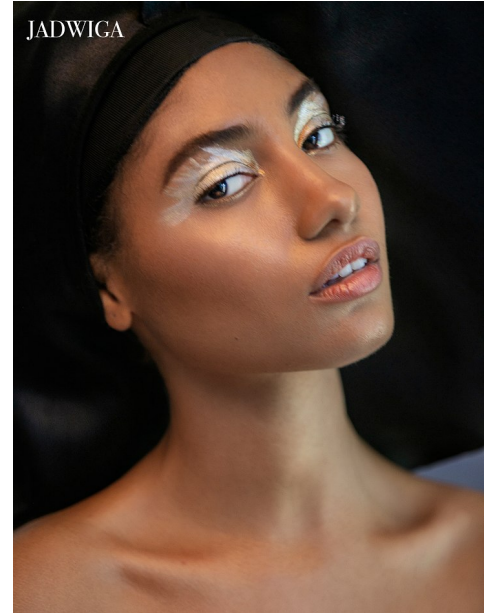
Height: 5'8" Dress: 2 US Bust: 32" Waist: 24" Hips: 35.5" Shoes: 8 US Hair: Brown Eyes: Brown

FENTON

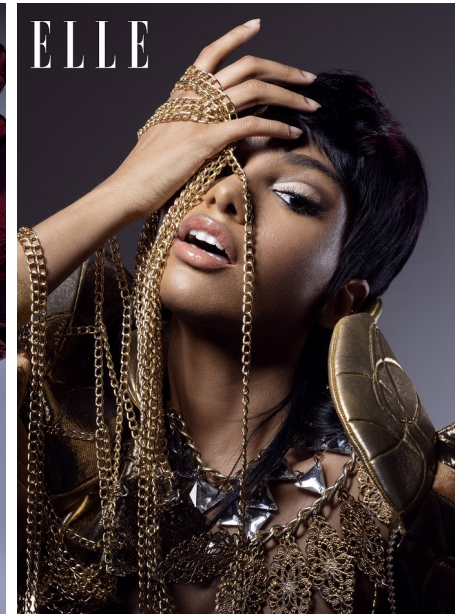
MODEL MANAGEMENT



JADWIGA



JADWIGA

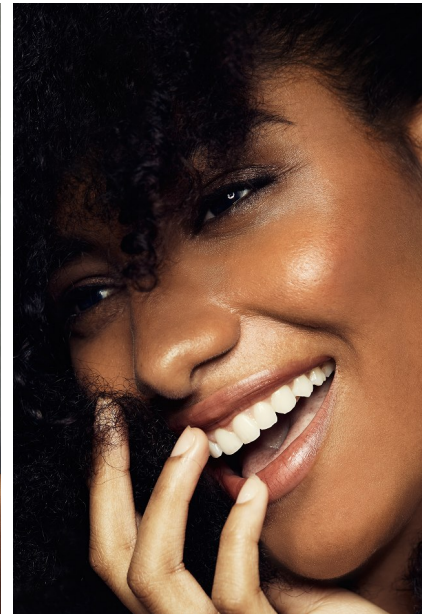


BETHANY CHASTEEN

Height: 5'8" Dress: 2 US Bust: 32" Waist: 24" Hips: 35.5" Shoes: 8 US Hair: Brown Eyes: Brown

FENTON

MODEL MANAGEMENT

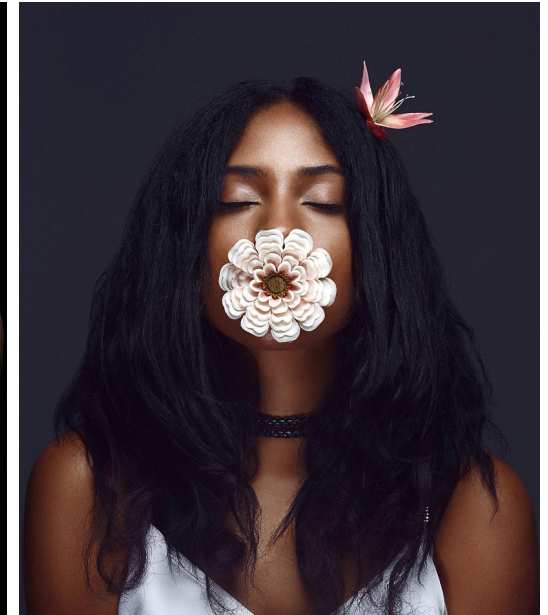
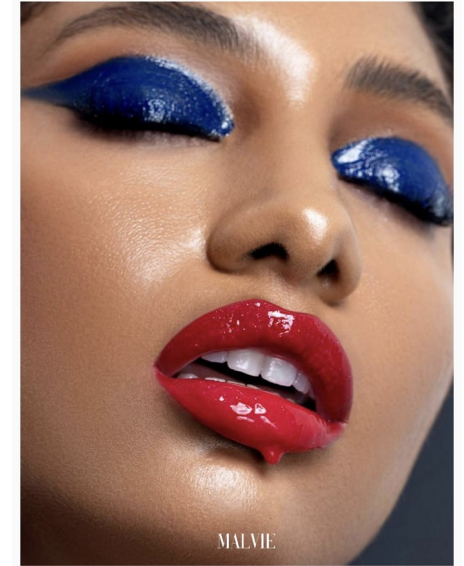


BETHANY CHASTEEN

Height: 5'8" Dress: 2 US Bust: 32" Waist: 24" Hips: 35.5" Shoes: 8 US Hair: Brown Eyes: Brown

FENTON

MODEL MANAGEMENT

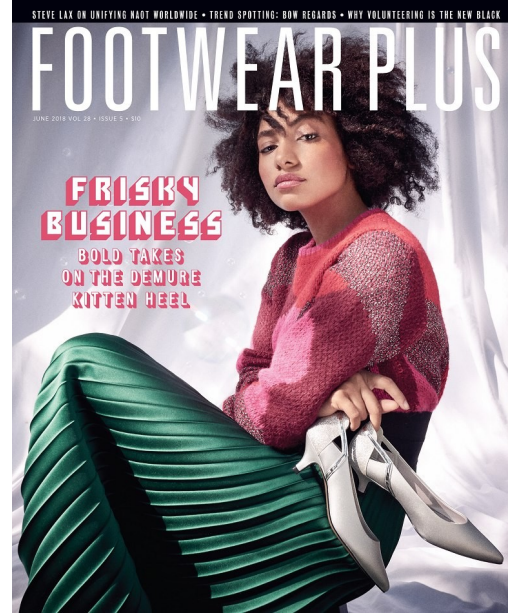


BETHANY CHASTEEN

Height: 5'8" Dress: 2 US Bust: 32" Waist: 24" Hips: 35.5" Shoes: 8 US Hair: Brown Eyes: Brown

FENTON

MODEL MANAGEMENT



COOL ORNAMENTS



When it comes to our specialties, there are no rules. Adorn them with eye-catching embellishments or dynamic details. For extra dimension, our manes are our canvas.

TONY BLANCH dress, NOLANER earrings.

ESSENCE.COM | 38 | JAN/FEB 2020

SUSPENDED STRANDS

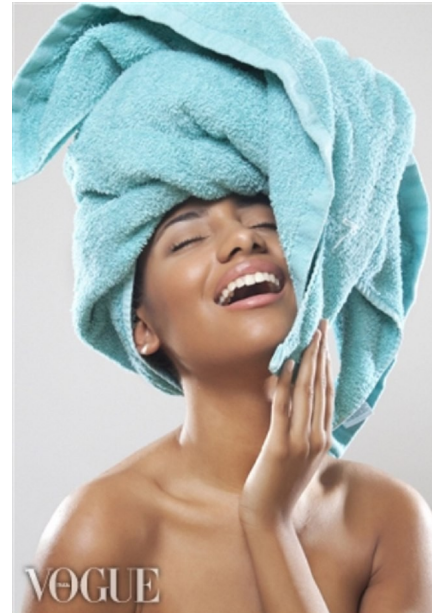
Playful, don't have to fall down your back. Sometimes they stay gravity and extend to the sky. This look is sure to stand out from the popular straight and silky styles.

TONY BURCH hair, ANIANA BOUTSARD-REVEL, earrings.



✕ PONYTAIL PLAY
For this style, you'll need 20-30 elastic bands, one pack of Manley Beach hair. "There is some black geland elastic bands," says her guru Nicole Howard, aka Nicky B.

ESSENCE.COM | 37 | JAN/FEB 2020



VOGUE

THE BEAUTY PLACE



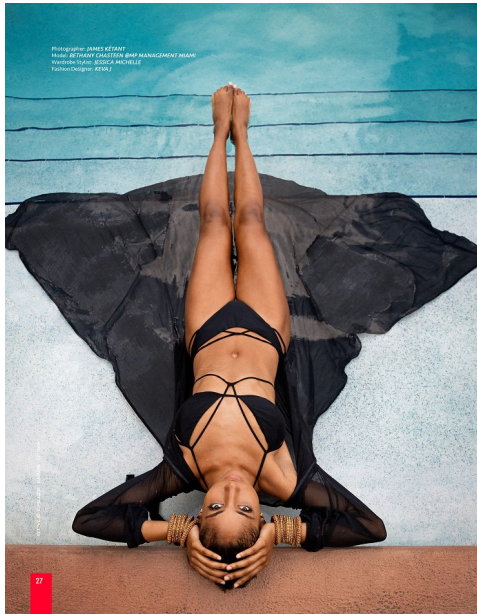
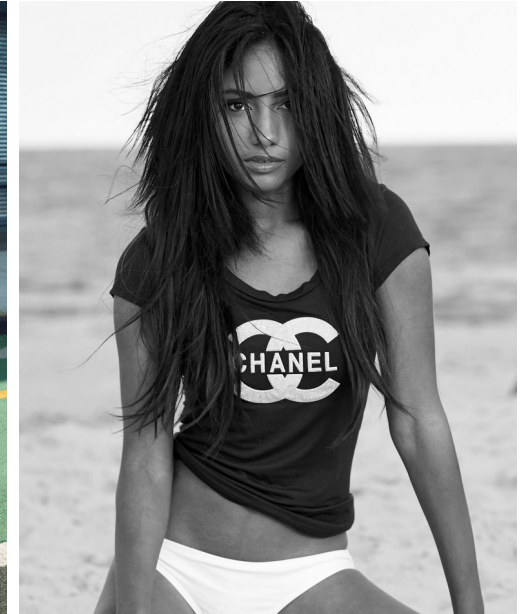
Face

BETHANY CHASTEEN

Height: 5'8" Dress: 2 US Bust: 32" Waist: 24" Hips: 35.5" Shoes: 8 US Hair: Brown Eyes: Brown

FENTON

MODEL MANAGEMENT



BETHANY CHASTEEN

Height: 5'8" Dress: 2 US Bust: 32" Waist: 24" Hips: 35.5" Shoes: 8 US Hair: Brown Eyes: Brown

FENTON
MODEL MANAGEMENT



BETHANY CHASTEEN

Height: 5'8" Dress: 2 US Bust: 32" Waist: 24" Hips: 35.5" Shoes: 8 US Hair: Brown Eyes: Brown